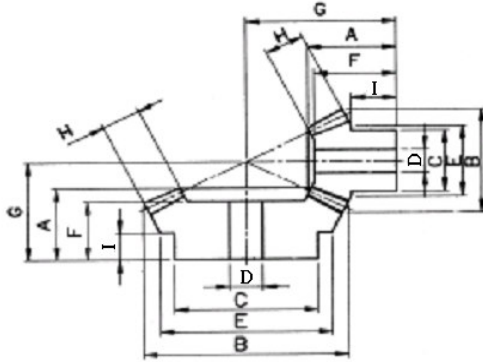




傘齒輪 M1~M5 速比1:2



速比	TYPE	材質	處理
1:2	GUSD	S45C	染黑
	GUSH	S45C	無電解鍍
	GUSS	SUS303	—
	GUMC	MC901	—

※S45C：齒面高週波

模數M=1~5

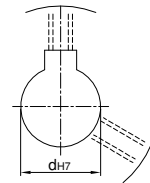
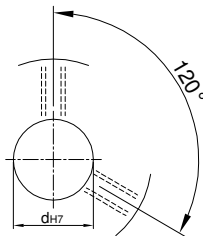
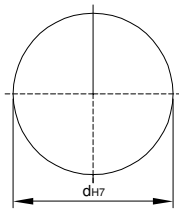
Catalog No.			齒數	軸徑 Bore D	A	B	C	I	E	F	G	H
速比	TYPE	模數										
1:2	GUSD GUSH GUSS GUMC	M1	15	6	18	16.79	12.5	11.5	12.5	17.31	27.35	6
			30	8	17	30.89	28	11.5	28	15.62	21.24	6
		M1.5	15	8	22	25.18	18.25	11.5	18.25	21	35.15	10
			30	10	22	46.34	36	12.5	40.64	19.29	27.97	10
		M2	15	10	25	33.58	25	12.5	25	23.66	43.69	12
			30	12	25	61.79	48	13.5	55	21.52	33.48	12
		M2.5	15	12	31	41.97	31	15.5	31	29.16	54.36	15
			30	15	30	77.24	55	15.5	68.63	24.98	40.61	15
		M3	15	12	35	50.37	37	16	37	33.02	63.04	18
			30	15	35	92.68	65	16.5	81.28	28.44	47.73	18
		M4	15	16	50	67.16	50	24	50	47.39	86.52	25
			30	20	48	123.58	80	25	110.16	41.16	64.58	25
		M5	15	20	65	83.94	62	23.5	62	61.68	111.73	30
			30	25	54	154.47	120	25	137.25	44.85	75.21	30

U圓孔(aperture)

T圓孔(aperture)+攻牙(TAP)

TG NEWS JIS KEY WAY+TAP

TG 新JIS鍵槽+攻牙



Order
訂貨代號

Catalog No.	—	齒數	—	軸孔內徑&加工
1:2GUSD M1	—	15	—	U6

Order
訂貨代號

Catalog No.	—	齒數	—	軸孔內徑&加工
1:2GUSD M1	—	30	—	U8

註1：如需規格表以外特殊加工，請來電告知。

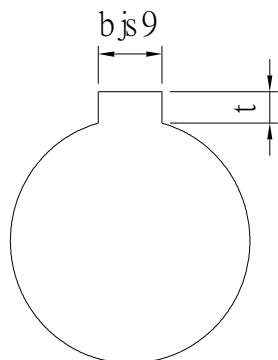
註2：軸孔配合之鍵槽止付螺絲，請對照孔徑鍵槽止付螺絲對照表



孔徑 鍵槽 止付螺絲設計對照表

孔徑&鍵槽尺寸表

dH7	鍵槽寬度bjs9		鍵槽深度	t公差
8	3	±0.0125	1.4	+0.1 0
9				
10				
11	4	±0.015	1.8	
12				
13				
14	5	±0.015	2.3	
15				
16				
17				
18	6	±0.015	2.8	
19				
20				
21				
22	8	±0.018	3.3	+0.2 0
23				
24				
25				
26				
28				
29				
30				
31				
32				
33	10	±0.0215	3.8	
34				
35				
38				
40	12	±0.0215	3.8	
42				
43				
44				
45	14	±0.0215	3.8	
46				
47				
48				
50				
50				



孔徑&止付螺絲對照表

dH7	螺絲規格
4	M3
5	
6	
6.35	
7	
8	M4
9	
10	
11	
12	M5
13	
14	
15	
16	
17	M6
18	
19	
20	
21	
22	
23	
24	
25	
26	
28	M8
29	
30	
31	
32	
33	
34	
35	
37	
38	
40	M10
42	
43	
44	
45	
46	
47	
48	
50	
52	
55	
57	
60	