

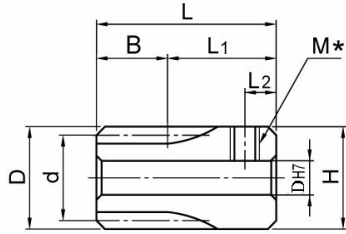


正齒輪 M0.5 M0.8 M1.0 M1.5 MC尼龍 & 工程塑膠

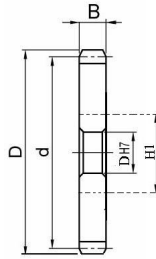
SPUR GEARS -PRESSURE ANGLE 20° MODULE 0.5/0.8/1.0/1.5 PLASTIC



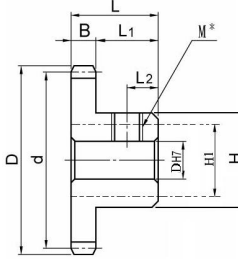
齒輪形狀： D形



A形



B形



TYPE	齒輪材質	白鐵心
GSMC	MC901	—
GSMCS	MC901	SUS303
GSPO	POM	—
GSPOS	POM	SUS303

※H1為附白鐵心之外徑

Catalog No.		齒數	齒寬 B	形狀	軸孔徑選擇 PH7	d	D	H	L	L1	L2	M	H1	
Type	模數													
GSMC GSMCS GSPO GSPOS	0.5	15	8	K	3 .4 .5	7.5	8.5	9	18	10	3	M3	—	
		16			8	9								
		18			9	10	10							
		20			10	11	11							
		20	3	A	3 .4 .5	10	11	8.5	8	5	2.5			
		24			12	13								
		25			12.5	13.5								
		28			14	15								
		30			15	16								
		32			16	17								
	36	2	B	3 .4 .5 .6	18	19	10	7						
	40				20	21								
	45				22.5	23.5								
	48				24	25								
	50	25	26											
	0.8	7	K	4 .5	4 .5	9.6	11.2	11.2	20	13	3	M3		
					14	11.2	12.8							12.8
					15	12	13.6							13.6
					16	12.8	14.4							
		18	5	B	4 .5 .6	14.4	16	10	14	9	4			M4
		20				16	17.6							
		24				19.2	20.8							
		25				20	21.6							
		28				22.4	24							
		30				24	25.6							
	32	25.6	27.2											
	36	6		.8	28.8	30.4	14							
	40				32	33.6								
	45				36	37.6								
	48				38.4	40								
	50	40	41.6											
	1.0	12	A	6	15	17	—	—	—	—	—	10		
			K	8	16	18	18	25	13	3	M3	—		
		10	B		10	18	20	15	20	10	4	M4		12
						20	22	16						
						24	26	20						
						25	27	20						
						26	28	22						
						30	30	25						
		35	35		26									
36		36	28											
40	40	28												
45	45	30												
48	48	30												
50	50	35												
1.5	15	B	8	24	27	20	24	9	3	M3	12			
				27	30	22								
	15	B	10	10	30	33	25	27	12	4	M4	14		
					36	39	30							
					37.5	40.5	30							
					39	42	32							
					42	45	34							
					45	48	35							
					52.5	55.5	40							
					54	57	40							
60	63	45												

Order 訂貨代號 Catalog No. — 齒數 — 齒寬 — 形狀 — 軸孔內徑&加工

GSMC0.5 — 28 — 3 — B — T6

註1：如需規格表以外特殊加工，請來電告知。

註2：軸孔配合之鍵槽止付螺絲，請對照 [孔徑鍵槽止付螺絲對照表](#)