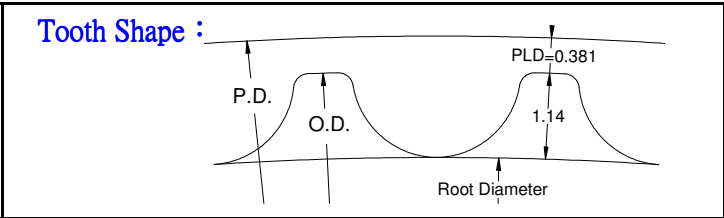


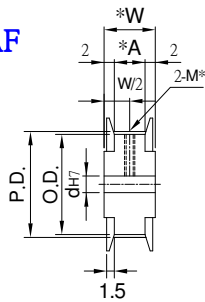


## 時規皮帶輪 3GT POWER GRIP < 3GT PULLEYS >

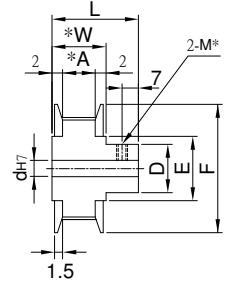


Type	Material	Treatment	Flange	Flange Treatment
PLAAA	A7075	Anodize	A6061	Anodize
PLAEA		Electroless nickel		Electroless nickel
PLS	1045	—	1045	—
PLSS	SUS303	—	A6061	Anodize

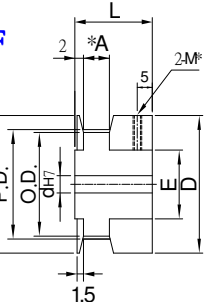
Pulley Shapes : AF



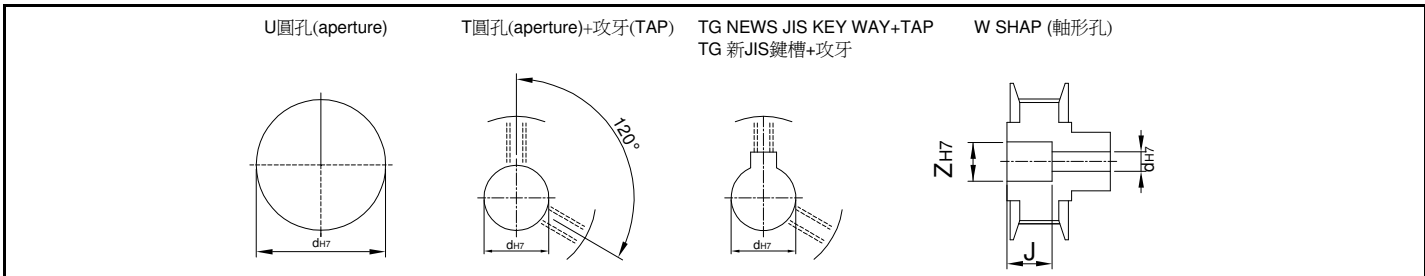
BF



DF



Type	Catalog No.			Bore configuration	Bore dh7				Bore W only (1mm Increment)		P.D.	O.D	D	F	E								
	No.of teeth	Teeth Width Code	Pulley Shapes		U.T.TG Hole		W Hole		Z							J							
					AF	BF,DF	AF	BF,DF	AF	BF,DF													
PLAAA PLAEA PLS PLSS	14	3GT007	DF	U	—	4~6	—	—	—	—	13.37	12.61	16	16	10								
	15					4~6					14.32	13.56											
	16					4~7					15.28	14.52											
	18					A:7					4~8	—	—	—	—	—	—	17.19	16.43	20	20	13	
	20					W:11					4~8	—	—	—	—	—	—	19.1	18.34	22	22	14	
	22					L:19					4~10	—	—	—	—	—	—	21.01	20.25	25	25	—	
	24					3GT011					AF	TG	—	4~10	4~8	6	9	—	—	22.92	22.16	14	25
	25	4~11	4~10	6~8	6		9~11	9	—	—				23.87	23.11	16	28	18					
	26	5~11	5~10	6~8	6		9~11	9	(AF) 2 ≤ J ≤ W-2	24.83				24.07									
	28	A:11	5~13	5~10	6~9		6~8	9~12		9~11				26.74	25.98	18	30	20					
	30	W:15	6~14	6~12	6~12		6~9	9~15		9~12				28.65	27.89	20	32	23					
	32	L:23	6~16	6~12	6~13		6~9	9~16		9~12				30.56	29.8	20	35	25					
	34	3GT017	BF	W	—		6~18	6~13		6~15				6~14	9~19				9~18	32.47	31.71		
	36						6~18	6~13		6~15				6~14	9~19				9~18	34.38	33.62	26	40
	40						A:17	8~23		8~16				8~18	8~17	11~22	11~21	(BF) 2 ≤ J ≤ L-2	38.2	37.44	30	44	32
	44						W:21	8~25		8~18				8~22	8~18	11~26	11~22		42.02	41.25	32	48	36
	48					L:29	8~25	8~20		8~24	8~19	11~28	11~24	45.84	45.07	34	50		38				
	50					8~28	8~20	8~25		8~19	11~30	11~24	47.75	46.98	52					40			
	60	8~32	8~22	8~28	8~24	11~34	11~28	57.3	56.53	39	61	46											



Order TYPE — Catalog No. — Bore configuration  
 訂貨代號 PLAA — 303GT017BF — T10

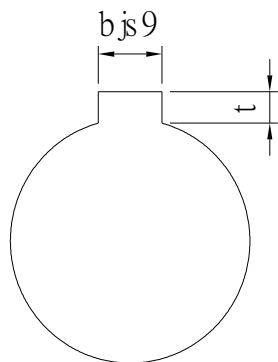
PS1 : if you need another exceptional to process the specifications form, please contact us.  
 PS2 : Bore,Key Groove & Set Screw match,Please refer to 【Core & Kew Groove & Set Screw Design Form】 .



# Core & Key Groove & Set Screw Design Form

## Core&Key Groove Dimension Form

dH7	Key Groove Width bjs9		Depth	tolerance
8	3	±0.0125	1.4	+ 0.1 0
9				
10				
11	4	±0.015	1.8	
12				
13				
14	5	±0.015	2.3	
15				
16				
17				
18	6	±0.015	2.8	
19				
20				
21				
22	8	±0.018	3.3	+ 0.2 0
23				
24				
25				
26				
28				
29				
30				
31				
32				
33	10	±0.0215	3.8	
34				
35				
38				
40	12	±0.0215	3.8	
42				
43				
44				
45	14	±0.0215	3.8	
46				
47				
48				
50				
50				



## Core&Set Screw Form

dH7	M
4	M3
5	
6	
6.35	
7	
8	M4
9	
10	
11	
12	M5
13	
14	
15	
16	
17	M6
18	
19	
20	
21	
22	
23	
24	
25	
26	
28	M8
29	
30	
31	
32	
33	
34	
35	
37	M10
38	
40	
42	
43	
44	
45	
46	
47	
48	
50	
52	
55	
57	
60	