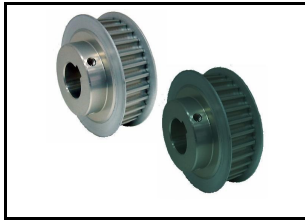
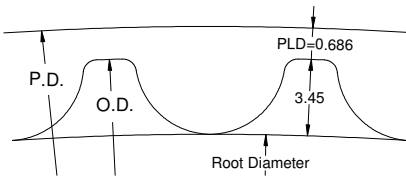




時規皮帶輪 8M POWER GRIP < 8M PULLEYS >

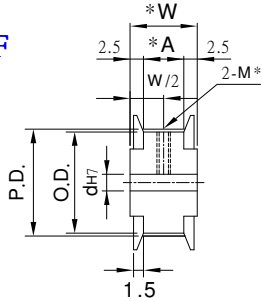


Tooth Shape :

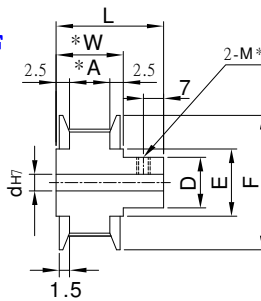


Type	Material	Treatment	Flange	Flange Treatment
PLAAA	A7075	Anodize	A6061	Anodize
PLAEA		Electroless nickel		Electroless nickel
PLS	1045	—	1045	—
PLSS	SUS303	—	A6061	Anodize

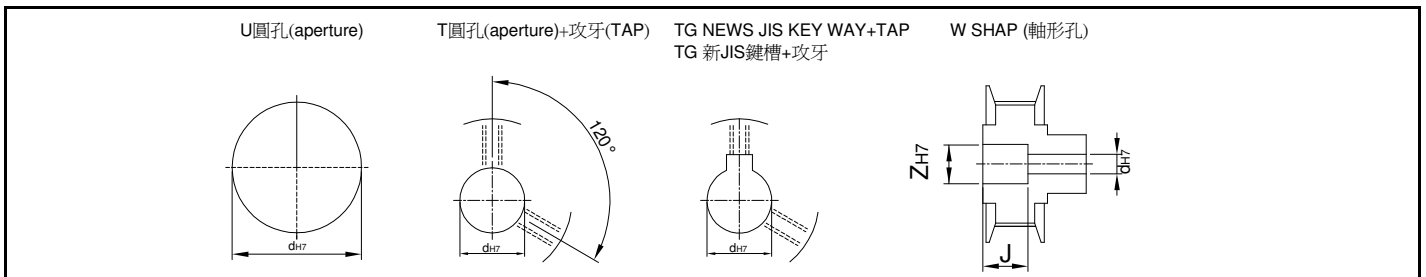
Pulley Shapes : AF



BF



Type	Catalog No.			Bore configuration	Bore dh7				Bore W only (1mm Increment)		P.D.	O.D.	D	F	E		
	No. of teeth	Teeth Width Code	Pulley Shapes		U.T.TG Hole		W Hole		Z							J	
					AF	BF	AF	BF	AF	BF							
PLAAA PLAEA PLS PLSS	18	8M017	AF	U	12~26	12~20	12~19	12~16	15~24	15~20	3 ≤ J ≤ W-3	45.84	44.46	32	52	36	
	19	A:17			12~28	12~20	12~22	12~18	15~26	15~23		48.38	47.01	35	55	40	
	20	W:22			12~30	12~22	12~22	12~19	15~26	15~24		50.93	49.56	36	58		
	21	L:37(L:42)			12~32	12~24	12~25	12~22	15~30	15~26		53.48	52.1	40	61	45	
	22				12~34	12~25	12~25	12~24	15~30	15~28		56.02	54.65	41			
	24	8M028			12~40	12~28	12~30	12~25	15~35	15~30		61.12	59.74	46	67	50	
	25	A:28			12~40	12~28	12~30	12~28	15~38	15~32		63.66	62.29	48	70	56	
	26	W:33			14~45	14~30	14~30	14~30	18~40	18~35		66.21	64.84	51	74	58	
	28	L:48(L:53)			14~48	14~35	14~30	14~30	18~42	18~40		71.3	69.93	55	80	60	
	30				14~50	14~38	14~35	14~30	18~50	18~45		76.39	75.02	60	87	67	
	BF	32	8M033	BF	TG W	14~55	14~45	14~35	14~30	18~50	18~46	3 ≤ J ≤ L-3	81.49	80.12	63		
		34	A:33			16~60	16~48	16~35	16~35	20~55	20~50		86.56	85.21	70	95	75
		36	W:38			16~65	16~50	16~38	16~35	20~60	20~55		91.67	90.3	75	99	80
		38	L:53(L:58)			16~67	16~50	16~40	16~38	20~62	20~60		96.77	95.39	80	104	84
		40				20~72	20~55	20~42	20~40	25~65	25~62		101.86	100.49	85	111	90
		44	8M044			20~75	20~60	20~50	20~48	25~72	25~70		112.05	110.67	90	119	100
		48	A:44			20~80	20~65	20~50	20~50	25~80	25~80		122.23	120.86	100	127	105
		50	W:49			20~80	20~65	20~50	20~50	25~80	25~80		127.32	125.95		135	115
		60	L:64(L:69)			20~80	20~65	20~50	20~50	25~80	25~80		152.7	151.42		160	140



Order TYPE — Catalog No. — Bore configuration
 訂貨代號 PLAA — 208M017BF — T15

PS1 : if you need another exceptional to process the specifications form, please contact us.

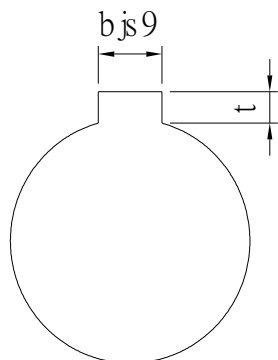
PS2 : Bore,Key Groove & Set Screw match,Please refer to 【Core & Key Groove & Set Screw Design Form】 .



Core & Key Groove & Set Screw Design Form

Core&Key Groove Dimension Form

dH7	Kew Groove Width bjs9		Depth	tolerance
8	3	±0.0125	1.4	+ 0.1 0
9				
10				
11	4	±0.015	1.8	
12				
13				
14	5	±0.015	2.3	
15				
16				
17				
18	6	±0.015	2.8	
19				
20				
21				
22	8	±0.018	3.3	+ 0.2 0
23				
24				
25				
26				
28				
29				
30				
31				
32				
33	10	±0.0215	3.8	
34				
35				
38				
40	12	±0.0215	3.8	
42				
43				
44				
45	14	±0.0215	3.8	
46				
47				
48				
50				
50				



Core&Set Screw Form

dH7	M
4	M3
5	
6	
6.35	
7	
8	M4
9	
10	
11	
12	M5
13	
14	
15	
16	
17	M6
18	
19	
20	
21	
22	
23	
24	
25	
26	
28	M8
29	
30	
31	
32	
33	
34	
35	
37	
38	
40	M10
42	
43	
44	
45	
46	
47	
48	
50	
52	
55	
57	
60	