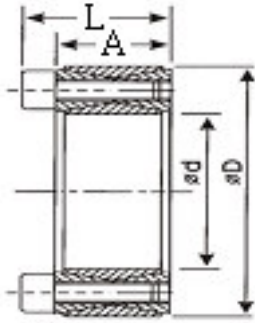




Keyless Bushing EA



Material : S45C

M : Metric Screw

TS : Screw Bolt Tightening Torque

T : Max Torque

F : Allowable Thrust Load

P : Side Surface Pressure of Hub



TYPE	d mm	D mm	A mm	L mm	M mm	Ts Nm	T Nm	F KN	P N/mm ²
EA-20	20	47	20	26	M6	14	270	27	90
EA-22	22	47	20	26	M6	14	300	27	90
EA-24	24	50	20	26	M6	14	360	30	95
EA-25	25	50	20	26	M6	14	380	30	95
EA-28	28	55	20	26	M6	14	470	34	100
EA-30	30	55	20	26	M6	14	500	34	110
EA-32	32	60	20	26	M6	14	650	41	110
EA-35	35	60	20	26	M6	14	700	41	110
EA-38	38	65	20	26	M6	14	880	45	110
EA-40	40	65	20	26	M6	14	950	47	110
EA-42	42	75	24	32	M8	35	1600	75	130
EA-45	45	75	24	32	M8	35	1700	75	130
EA-48	48	80	24	32	M8	35	1800	75	120
EA-50	50	80	24	32	M8	35	1900	75	120
EA-55	55	85	24	32	M8	35	2300	85	130
EA-60	60	90	24	32	M8	35	2500	85	120
EA-65	65	95	24	32	M8	35	3000	95	130
EA-70	70	110	28	38	M10	69	4800	130	130
EA-75	75	115	28	38	M10	69	5000	130	130
EA-80	80	120	28	38	M10	69	5300	130	130
EA-85	85	125	28	38	M10	69	6400	150	140
EA-90	90	130	28	38	M10	69	6500	160	140
EA-95	95	135	28	38	M10	69	8000	170	140
EA-100	100	145	30	42	M12	120	9700	190	140
EA-110	110	155	30	42	M12	120	10600	200	130
EA-120	120	165	30	42	M12	120	13000	210	130
EA-130	130	180	38	50	M12	120	18000	270	120
EA-140	140	190	38	50	M12	120	21000	300	120
EA-150	150	200	38	50	M12	120	24000	320	120
EA-160	160	210	38	50	M12	120	28000	350	130
EA-170	170	225	44	58	M14	190	33000	380	120
EA-180	180	235	44	58	M14	190	38000	420	120
EA-190	190	250	52	66	M14	190	46000	480	110
EA-200	200	260	52	66	M14	190	53000	530	120
EA-220	220	285	56	72	M16	295	68000	620	120
EA-240	240	305	56	72	M16	295	86000	710	130
EA-260	260	325	56	72	M16	295	105000	810	135

Order
訂貨代號

TYPE
EA-20