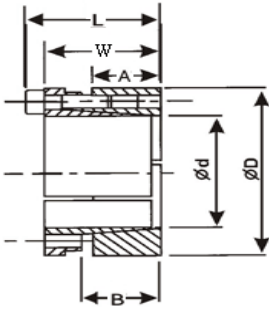




Keyless Bushing ED



Material : S45C

M : Metric Screw

TS : Screw Bolt Tightening Torque

T : Max Torque

F : Allowable Thrust Load

P : Side Surface Pressure of Hub



| TYPE | d | D | B | A | W | L | M | Ts | T | F | P |
|--------|-----|-----|------|----|----|----|-----|-----|-------|-----|-------------------|
| | mm | mm | mm | mm | mm | mm | mm | Nm | Nm | KN | N/mm ² |
| ED-20 | 20 | 47 | 31 | 26 | 42 | 48 | M6 | 17 | 550 | 55 | 100 |
| ED-22 | 22 | 47 | 31 | 26 | 42 | 48 | M6 | 17 | 600 | 55 | 100 |
| ED-24 | 24 | 50 | 31 | 26 | 42 | 48 | M6 | 17 | 660 | 55 | 100 |
| ED-25 | 25 | 50 | 31 | 26 | 42 | 48 | M6 | 17 | 680 | 55 | 100 |
| ED-28 | 28 | 55 | 31 | 26 | 42 | 48 | M6 | 17 | 720 | 55 | 100 |
| ED-30 | 30 | 55 | 31 | 26 | 42 | 48 | M6 | 17 | 820 | 55 | 100 |
| ED-32 | 32 | 60 | 31 | 26 | 42 | 48 | M6 | 17 | 1400 | 80 | 130 |
| ED-35 | 35 | 60 | 31 | 26 | 42 | 48 | M6 | 17 | 1400 | 80 | 130 |
| ED-38 | 38 | 65 | 31 | 26 | 42 | 48 | M6 | 17 | 1600 | 80 | 130 |
| ED-40 | 40 | 65 | 31 | 26 | 42 | 48 | M6 | 17 | 1600 | 110 | 130 |
| ED-42 | 42 | 75 | 36 | 30 | 50 | 58 | M8 | 41 | 2500 | 110 | 130 |
| ED-45 | 45 | 75 | 36 | 30 | 50 | 58 | M8 | 41 | 2500 | 150 | 170 |
| ED-48 | 48 | 80 | 36 | 30 | 50 | 58 | M8 | 41 | 3700 | 150 | 170 |
| ED-50 | 50 | 80 | 36 | 30 | 50 | 58 | M8 | 41 | 3700 | 150 | 160 |
| ED-55 | 55 | 85 | 36 | 30 | 50 | 58 | M8 | 41 | 4100 | 150 | 160 |
| ED-60 | 60 | 90 | 36 | 30 | 50 | 58 | M8 | 41 | 4500 | 160 | 160 |
| ED-65 | 65 | 95 | 46 | 39 | 50 | 58 | M8 | 41 | 4500 | 160 | 150 |
| ED-70 | 70 | 110 | 46 | 39 | 60 | 70 | M10 | 83 | 8400 | 240 | 150 |
| ED-75 | 75 | 115 | 46 | 39 | 60 | 70 | M10 | 83 | 8400 | 240 | 140 |
| ED-80 | 80 | 120 | 46 | 39 | 60 | 70 | M10 | 83 | 9600 | 250 | 140 |
| ED-85 | 85 | 125 | 46 | 39 | 60 | 70 | M10 | 83 | 11000 | 250 | 150 |
| ED-90 | 90 | 130 | 46 | 39 | 60 | 70 | M10 | 83 | 13000 | 300 | 150 |
| ED-95 | 95 | 135 | 52 | 39 | 60 | 70 | M10 | 83 | 13000 | 300 | 150 |
| ED-100 | 100 | 145 | 52 | 46 | 68 | 80 | M12 | 145 | 17500 | 350 | 150 |
| ED-110 | 110 | 155 | 52 | 46 | 68 | 80 | M12 | 145 | 20000 | 300 | 150 |
| ED-120 | 120 | 165 | 52 | 46 | 68 | 80 | M12 | 145 | 21300 | 330 | 150 |
| ED-130 | 130 | 180 | 52 | 46 | 68 | 80 | M12 | 145 | 28000 | 350 | 150 |
| ED-140 | 140 | 190 | 58.5 | 51 | 76 | 90 | M14 | 190 | 30400 | 350 | 150 |
| ED-150 | 150 | 200 | 58.5 | 51 | 76 | 90 | M14 | 190 | 39000 | 400 | 160 |
| ED-160 | 160 | 210 | 58.5 | 51 | 76 | 90 | M14 | 190 | 41700 | 400 | 170 |
| ED-170 | 170 | 225 | 58.5 | 51 | 76 | 90 | M14 | 190 | 52000 | 460 | 160 |
| ED-180 | 180 | 235 | 58.5 | 51 | 76 | 90 | M14 | 190 | 55000 | 460 | 170 |

Order

TYPE

訂貨代號

ED-20