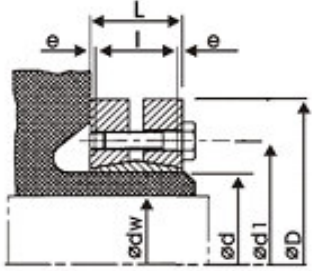




Keyless Bushing EED



Material : S45C

M : Metric Screw

TS : Screw Bolt Tightening Torque

T : Max Torque

F : Allowable Thrust Load

P : Side Surface Pressure of Hub



TYPE	d	dw	D	I	L	d1	e	M	Ts	T	F	P ²
	mm	mm										mm
EED-14	14	11	38	7	11.0	23	2.00	4xM5	4	30	6	186
		12								50	9	
EED-16	16	13	41	11	15.0	26	2.00	5xM5	4	70	10	130
		14								90	13	
EED-24	24	19	50	14	19.5	36	2.75	4xM5	4	170	25	286
		20								210	27	
EED-30	30	24	60	16	21.5	44	2.75	5xM5	4	250	29	283
		25								300	29	
EED-36	36	26	72	18	23.5	52	2.75	6xM5	12	340	31	307
		28								380	33	
EED-44	44	30	80	20	25.5	61	2.75	7xM5	12	440	50	317
		31								570	58	
EED-50	50	32	90	22	27.5	70	2.75	8xM6	12	620	64	289
		35								780	74	
EED-55	55	36	100	23	30.5	75	3.75	8xM6	12	860	77	252
		36								940	79	
EED-62	62	40	110	23	30.5	86	3.75	10xM6	12	1160	86	279
		42								1380	92	
EED-68	68	42	115	23	30.5	86	3.75	10xM6	12	1160	79	255
		45								1520	88	
EED-75	75	48	138	25	32.5	100	3.75	7xM8	30	1880	99	273
		48								1850	100	
EED-80	80	50	145	25	32.5	100	3.75	7xM8	30	2200	111	256
		52								2400	117	
EED-85	85	50	155	30	39.0	114	4.50	10xM8	30	2000	97	285
		55								2500	106	
EED-90	90	60	170	34	44.0	124	5.00	12xM8	30	3150	120	258
		65								2500	119	
EED-100	100	65	185	39	50.0	136	5.50	9xM10	59	3200	137	244
		65								3950	155	
EED-110	110	70	188	39	50.0	141	5.50	9xM10	59	3200	124	234
		75								3900	140	
EED-115	115	70	215	42	54.0	160	6.00	12xM10	59	4600	158	277
		75								4800	175	
EED-120	120	75	215	42	54.0	160	6.00	12xM10	59	6100	195	266
		75								7400	216	
EED-125	125	80	230	46	60.0	175	7.25	10xM12	100	7400	216	264
		80								4750	170	
EED-130	130	85	230	46	60.0	175	7.25	10xM12	100	6000	190	255
		85								7250	210	
EED-140	140	85	265	50	64.5	192	7.25	12xM12	100	6900	195	263
		90								7500	220	
EED-155	155	85	265	50	64.5	192	7.25	12xM12	100	9000	240	263
		90								7200	229	
EED-155	155	95	265	50	64.5	192	7.25	12xM12	100	9000	252	263
		95								10800	262	
EED-155	155	95	265	50	64.5	192	7.25	12xM12	100	7400	235	263
		100								9200	259	
EED-155	155	100	265	50	64.5	192	7.25	12xM12	100	11100	269	263
		100								10600	285	
EED-155	155	105	265	50	64.5	192	7.25	12xM12	100	13300	314	263
		105								14500	340	
EED-155	155	105	265	50	64.5	192	7.25	12xM12	100	11000	296	263
		105								13000	324	
EED-155	155	110	265	50	64.5	192	7.25	12xM12	100	15000	352	263
		110								11300	304	
EED-155	155	110	265	50	64.5	192	7.25	12xM12	100	13300	333	263
		110								15400	362	
EED-155	155	115	265	50	64.5	192	7.25	12xM12	100	15100	367	263
		115								17600	396	
EED-155	155	115	265	50	64.5	192	7.25	12xM12	100	20100	425	263
		115								22000	447	
EED-155	155	115	265	50	64.5	192	7.25	12xM12	100	25000	478	263
		115								28000	509	

Order TYPE
訂貨代號 EED-30

PS1 : if you need another exceptional to process the specifications form, please contact us.