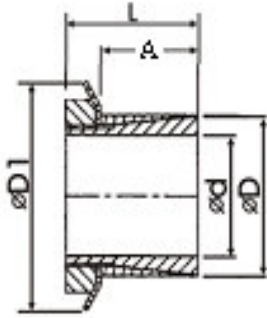




Keyless Bushing EI



Material : S45C Material : S45C

M : Metric Screw

TS : Screw Bolt Tightening Torque

T : Max Torque

F : Allowable Thrust Load

P : Side Surface Pressure of Hub



TYPE	d	D	D1	A	L	M	Ts	T	F	P	Weight
	mm	mm	mm	mm	mm	mm	Nm	Nm	KN	N/mm ²	kg
EI-14	14	25	32	20	30	KM4	95	64	9	45	0.07
EI-15	15	25	32	20	30	KM4	95	70	9	45	0.064
EI-16	16	25	32	20	30	KM4	95	73	9	45	0.06
EI-17	17	25	32	20	32	KM4	95	80	9	45	0.101
EI-18	18	30	38	20	32	KM4	95	83	9	45	0.095
EI-19	19	30	38	20	32	KM5	160	105	11	45	0.09
EI-20	20	30	38	20	32	KM5	160	112	11	45	0.117
EI-22	22	35	45	25	36	KM6	220	163	14	45	0.11
EI-24	24	35	45	25	36	KM6	220	178	14	45	0.1
EI-25	25	35	45	25	36	KM6	220	185	14	45	0.09
EI-28	28	40	52	30	42	KM7	340	250	17	40	0.17
EI-30	30	40	52	30	42	KM7	340	270	17	40	0.22
EI-32	32	45	58	30	44	KM8	480	350	21	45	0.2
EI-35	35	45	58	30	44	KM8	480	390	21	45	0.19
EI-38	38	50	65	30	45	KM9	680	500	26	45	0.31
EI-40	40	50	65	30	45	KM9	680	520	26	50	0.28
EI-42	42	55	70	30	46	KM10	870	630	30	50	0.43
EI-45	45	55	70	30	46	KM10	870	680	30	50	0.38
EI-48	48	60	75	30	46	KM11	970	840	35	50	0.46
EI-50	50	60	75	30	46	KM11	970	880	35	50	0.4
EI-55	55	65	80	30	46	KM12	1100	1030	37	50	0.48
EI-60	60	70	85	30	52	KM13	1300	1360	45	55	0.51

Order

TYPE

訂貨代號

EI-30

PS1 : if you need another exceptional to process the specifications form, please contact us.