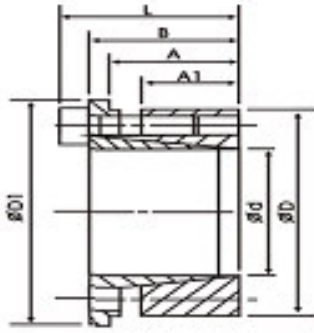




Keyless Bushing EK



Material : S45C

M : Metric Screw

TS : Screw Bolt Tightening Torque

T : Max Torque

F : Allowable Thrust Load

P : Side Surface Pressure of Hub



TYPE	d	D	D1	A	A1	B	L	M	Ts	T	F	P	Weight
	mm	mm	mm	mm	mm	mm	mm	mm	Nm	Nm	KN	N/mm ²	kg
EK-08	08	21	23.5	14.5	10	16.5	20.5	M4	4.8	31.4	5.96	80	0.03
EK-10	10	23	25.5	14.5	10	16.5	20.5	M4	4.8	31.4	5.96	80	0.04
EK-11	11	24	26.5	14.5	10	16.5	20.5	M4	4.8	34.3	5.96	77	0.04
EK-12	12	26	28.5	14.5	10	16.5	20.5	M4	4.8	50.3	7.94	95	0.05
EK-14	14	28	30.5	17.5	12	20	24	M4	4.8	73.3	9.9	92	0.06
EK-15	15	29	31.5	17.5	12	20	24	M4	4.8	94.1	11.9	107	0.07
EK-16	16	30	32.5	17.5	12	20	24	M4	4.8	101	11.9	103	0.07
EK-17	17	31	33.5	17.5	12	20	24	M4	4.8	107	11.9	100	0.07
EK-18	18	32	34.5	17.5	12	20	24	M4	4.8	113	11.9	97	0.08
EK-19	19	33	35.5	17.5	12	20	24	M4	4.8	120	11.9	94	0.08
EK-20	20	38	42	20.5	15	25	30	M5	9.8	206	11.9	107	0.14
EK-22	22	40	44	20.5	15	25	30	M5	9.8	226	19.4	101	0.15
EK-24	24	42	46	20.5	15	25	30	M5	9.8	329	25.9	128	0.16
EK-25	25	43	47	20.5	15	25	30	M5	9.8	343	25.9	125	0.17
EK-28	28	46	50	22.5	17	28	33	M5	9.8	432	29.2	117	0.21
EK-30	30	48	52	22.5	17	28	33	M5	9.8	515	32.4	124	0.22
EK-32	32	50	54	22.5	17	28	33	M5	9.8	549	32.4	120	0.23
EK-35	35	57	62	25	19	32	38	M6	16.7	678	36.6	106	0.36
EK-38	38	60	65	25	19	32	38	M6	16.7	921	45.6	125	0.39
EK-40	40	62	67	25	19	32	38	M6	16.7	969	45.8	122	0.40
EK-42	42	62	69	25	19	32	38	M6	16.7	1010	45.8	118	0.42
EK-45	45	67	72	25	19	31	38	M6	16.7	1090	45.8	113	0.44
EK-48	48	70	75	25	19	32	38	M6	16.7	1390	54.9	129	0.46
EK-50	50	72	77	26	19	34.5	40.5	M6	16.7	1700	64.1	146	0.50
EK-55	55	77	82	26	19	34.5	40.5	M6	16.7	1860	564.1	137	0.55
EK-60	60	82	87	26	19	34.5	40.5	M6	16.7	2180	68.6	137	0.59
EK-65	65	87	92	26	19	34.5	40.5	M6	16.7	2360	68.6	129	0.63
EK-70	70	97	102	31.5	22	40.5	48.5	M8	40.2	3750	101	148	0.99
EK-75	75	102	107	31.5	22	40.5	48.5	M8	40.2	4030	118	141	1.00
EK-80	80	107	112	31.5	22	41.5	49.5	M8	40.2	5010	118	157	1.10
EK-85	85	112	117	31.5	22	41.5	49.5	M8	40.2	5320	187	150	1.20
EK-90	90	123	128	41.5	29	54	64	M10	81.3	8960	187	165	2.10
EK-95	95	128	133	41.5	29	54	64	M10	81.3	9460	187	158	2.20
EK-100	100	133	188	41.5	29	54	64	M10	81.3	9900	187	152	2.30

Order TYPE

訂貨代號 EK-30

PS1 : if you need another exceptional to process the specifications form, please contact us.