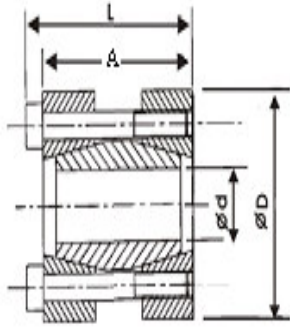




Keyless Bushing EM



Material : S45C
 M : Metric Screw
 TS : Screw Bolt Tightening Torque
 T : Max Torque
 F : Allowable Thrust Load
 P : Side Surface Pressure of Hub



TYPE	d	D	A	L	M	Ts	T	F
	mm	mm	mm	mm	mm	Nm	Nm	KN
EM-15	15	45	50	56	M6	17	150	17
EM-16	16	45	50	56	M6	17	160	17
EM-18	18	50	50	56	M6	17	180	17
EM-19	19	50	50	56	M6	17	190	17
EM-20	20	50	50	56	M6	17	200	17
EM-24	24	55	60	66	M6	17	360	26
EM-25	25	55	60	66	M6	17	370	26
EM-28	28	60	60	66	M6	17	420	26
EM-30	30	60	60	66	M6	17	450	26
EM-35	35	75	75	83	M8	41	640	31
EM-40	40	75	75	83	M8	41	730	31
EM-45	45	85	85	93	M8	41	1230	47
EM-50	50	90	85	93	M8	41	1370	47
EM-60	60	100	85	93	M8	41	2200	64

Order TYPE
 訂貨代號 EM-30

PS1 : if you need another exceptional to process the specifications form, please contact us.