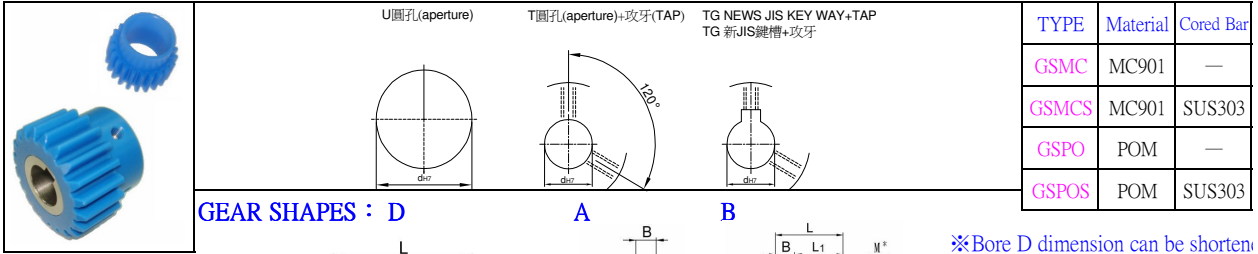
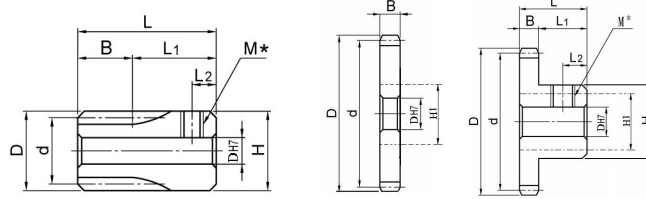


**正齒輪 M0.5 M0.8 M1.0 M1.5 MC尼龍 & 工程塑膠**  
**SPUR GEARS -PRESSURE ANGLE20° MODULE 0.5/0.8 / 1.0/ 1.5 PLASTIC**



GEAR SHAPES : D



※Bore D dimension can be shorten because GSMC(MC901) is absorber

※H1 : OD of Cored Bar

Catalog No.		Number of Teeth	Teeth Width Code B	Shapes	Bore Configuration Dh7	d	D	H	L	L1	L2	M	H1
Type	Module												
GSMC GSMCS GSPO GSPOS	0.5	15	8	K	3 .4 .5	7.5	8.5	9	18	10	3	M3	—
		16			8	9							
		18			9	10	10						
		20	10	11	11								
		20	3	A	3 .4 .5	10	11	8.5	10	8	5	2.5	
		24			12	13							
		25			12.5	13.5							
		28			14	15							
		30			15	16							
		32			16	17							
		36	18	19									
		40	20	21									
		45	22.5	23.5									
		48	24	25									
		50	25	26									
	12	7	K	4 .5	9.6	11.2	11.2	20	13	3	M3		
	14			11.2	12.8	12.8							
	15			12	13.6	13.6							
	16			12.8	14.4	14.4							
	18			14.4	16	16							
	20			16	17.6	17.6							
	24			19.2	20.8	20.8							
	25			20	21.6	21.6							
	28			22.4	24	24							
	30			24	25.6	25.6							
	32	25.6	27.2	27.2									
	36	28.8	30.4	30.4									
	40	32	33.6	33.6									
	45	36	37.6	37.6									
	48	38.4	40	40									
	50	40	41.6	41.6									
	15	12	A	6	15	17	—	25	13	3	M3		
	16			16	18	18							
	18		K	8	8	18	20					15	
	20					20	22					16	
	24					24	26					—	
	25					25	27					20	
	26					26	28					22	
	30					30	32					25	
	35					35	37					26	
36	36					38	28						
40	40	42	28										
45	45	47	30										
48	48	50	—										
50	50	52	35										
16	15	B	8	24	27	20	27	12	4	M4			
18			27	30	22								
20			30	33	25								
24			36	39	—								
25			37.5	40.5	30								
26			39	42	32								
28			42	45	34								
30			45	48	35								
35			52.5	55.5	40								
36			54	57	—								
40	60	63	45										

Order  
訂貨代號

Catalog No.	Number of Teeth	Teeth Width Code B	Shapes	Bore Configuration
GSMC0.5	28	3	B	T6

PS1 : if you need another exceptional to process the specifications form, please contact us.

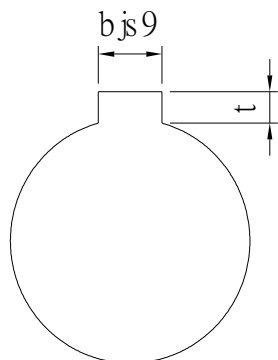
PS2 : Bore,Key Groove & Set Screw match,Please refer to 【Core & Kew Groove & Set Screw Design Form】 .



# Core & Key Groove & Set Screw Design Form

## Core&Key Groove Dimension Form

dH7	Key Groove Width bjs9		Depth	tolerance
8	3	±0.0125	1.4	+ 0.1 0
9				
10				
11	4	±0.015	1.8	
12				
13				
14	5	±0.015	2.3	
15				
16				
17				
18	6	±0.015	2.8	
19				
20				
21				
22	8	±0.018	3.3	+ 0.2 0
23				
24				
25				
26				
28				
29				
30				
31				
32				
33	10	±0.0215	3.8	
34				
35				
38				
40	12	±0.0215	3.8	
42				
43				
44				
45	14	±0.0215	3.8	
46				
47				
48				
50				
50				



## Core&Set Screw Form

dH7	M
4	M3
5	
6	
6.35	
7	
8	M4
9	
10	
11	
12	M5
13	
14	
15	
16	
17	M6
18	
19	
20	
21	
22	
23	
24	
25	
26	
28	M8
29	
30	
31	
32	
33	
34	
35	
37	M10
38	
40	
42	
43	
44	
45	
46	
47	
48	
50	
52	
55	
57	
60	