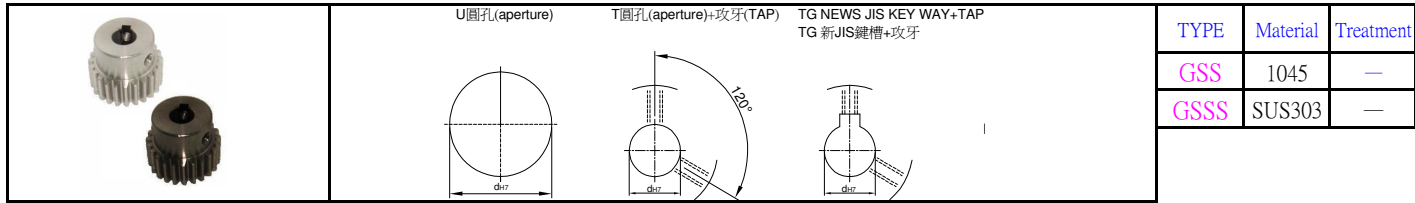


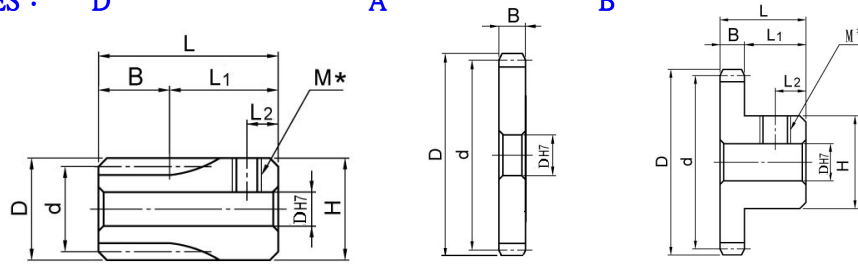


正齒輪 M1型

SPUR GEARS <M1>



GEAR SHAPES : D



Catalog No.		Number of Teeth	Teeth Width Code B	Shapes	Bore Configuration Dh7			d	D	H	L	L1	L2	M						
Type	Module				U	T	TG													
GSS GSSS	M1	12	12	D	6~8	6~8	--	12	14	14	30	18	5	M4						
		13							13	15					15					
		14	8		6~10	6~10			14	16					16	25	17	4		
		12													30	18	5			
		15	8		6~12	6~12			15	17					17	25	17	4	M4	
		12													30	18	5	M5		
		16	8		8~12	8~12			16	18					18	25	17	4	M4	
		12													30	18	5	M5		
		17	8		6~10	6~10		6~10	17	19					19	25	17	4	M4	
		12													30	18	5	M5		
		18	8		6~14	6~14		8~10	18	20					20	25	17	18		
		12													30	18				
		19	8	6~10	6~14	6~10	19	21	16	16										
		12								20				22	20					
		20	8	6~12	6~15	6~12	20	22	18	16	8	4	M4							
		12								20				22	20					
		21	8				6~12	8~15		8~12				21	23	18	16			
		12															22			
		22	8				6~12	8~16		8~12				22	24	20	16			
		12															23			
		23	8	6~12	8~17	8~12	23	25	20	16										
		12								24				26	20					
		24	8	6~12	8~18	8~12	24	26	20	16										
		12								25				27	20					
		25	8	6~15	6~20	6~15	25	27	24	16										
		12								26				28	22					
		26	8	6~15	8~20	8~15	26	28	24	16										
		12								27				29	20					
		27	8	6~15	6~21	6~15	27	29	24	16										
		12								28				30	20					
		28	8	6~15	6~22	6~17	28	30	26	16										
		12								29				31	20					
		29	8	6~15	10~22	10~17	29	31	26	16										
		12								30				32	20					
		30	8	6~18	6~23	6~17	30	32	25	16										
		12								30				32	27	20				
		32	6	6~18	6~24	6~17	32	34	25	16										
		10								32				34	25	16				
		34	6	6~18	10~26	10~17	34	36	28	16										
		10								34				36	20					
35	6	6~18	6~28	6~17	35	37	25	16												
10								35				37	27	20						
36	6	6~18	6~29	6~17	36	38	25	16												
10								36				38	30	20						
38	6	6~18	6~30	8~17	38	40	25	16												
10								38				40	30	20						
40	6	6~18	6~30	8~17	40	42	28	16												
10								40				42	30	20						

GSS GSSS	42	6	A B	6-28	8~36	8~17	42	44	28	16	10	5	M5
		10		6-30	10~36	10~20			30	20			
	44	6		6-28	8~38	8~17	44	46	28	16			
		10		6-30	10~38	10~20			30	20			
	45	6		6-28	8~39	8~17	45	47	28	16			
		10		10-30	10~39	10~20			30	20			
	46	6		10-30	8~40	8~20	46	48	30	16			
		10			10~40	10~20			20				
	48	6		10-40	8~42	8~25	48	50	40	16			
		10		10-44	10~42	10~30			44	20			
	50	6		10-40	8~44	8~25	50	52	40	16			
		10		10-46	10~44	10~30			46	20			
	52	6		10-40	8~46	8~25	52	54	40	16			
		10		10-46	10~46	10~30			46	20			
	60	6		10-44	8~54	8~30	60	62	44	16			
		10		10-50	12~54	12~35			50	20			
	70	6		10-48	10~64	10~35	70	72	48	16			
		10		10-56	12~64	12~40			56	20			
	80	6		10-50	12~74	12~35	80	82	50	16			
		10		10-60	15~74	15~40			60	20			
	100	6		10-50	15~94	15~35	100	102	50	16			
		10		10-60	17~94	17~40			60	20			
	120	6		10-54	15~114	15~35	120	122	54	16			
		10		10-70	17~114	17~40			70	20			

Order 訂貨代號	Catalog No.	Number of Teeth	Teeth Width Code B	Shapes	Bore Configuration			
GSSSM1	—	28	—	10	—	B	—	T10

PS1 : if you need another exceptional to process the specifications form, please contact us.

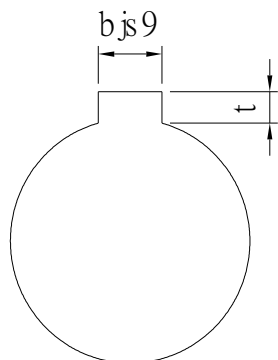
PS2 : Bore,Key Groove & Set Screw match,Please refer to **【Core & Key Groove & Set Screw Design Form】** .



Core & Key Groove & Set Screw Design Form

Core&Key Groove Dimension Form

dH7	Key Groove Width bjs9		Depth	tolerance
8	3	±0.0125	1.4	+ 0.1 0
9				
10				
11	4	±0.015	1.8	
12				
13				
14	5	±0.015	2.3	
15				
16				
17				
18	6	±0.015	2.8	
19				
20				
21				
22	8	±0.018	3.3	+ 0.2 0
23				
24				
25				
26				
28				
29				
30				
31				
32				
33	10	±0.0215	3.8	
34				
35				
38				
40	12	±0.0215	3.8	
42				
43				
44				
45	14	±0.0215	3.8	
46				
47				
48				
50				
50				



Core&Set Screw Form

dH7	M
4	M3
5	
6	
6.35	
7	
8	M4
9	
10	
11	
12	M5
13	
14	
15	
16	
17	M6
18	
19	
20	
21	
22	
23	
24	
25	
26	
28	M8
29	
30	
31	
32	
33	
34	
35	
37	
38	
40	M10
42	
43	
44	
45	
46	
47	
48	
50	
52	
55	
57	
60	