
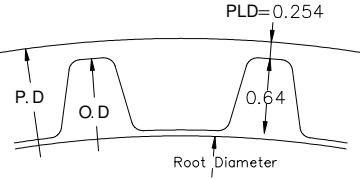
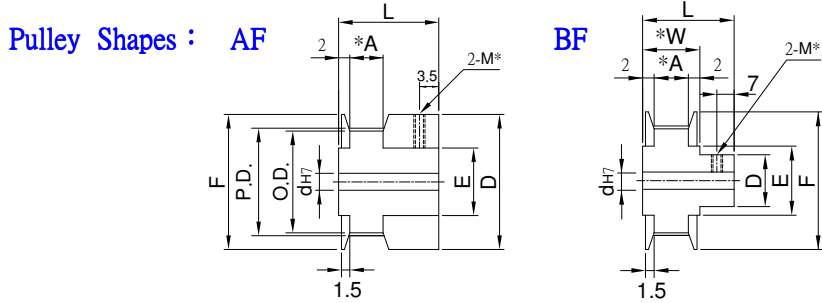




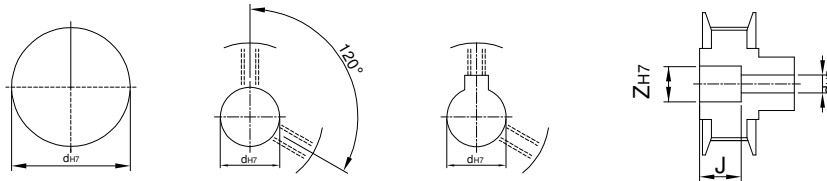
## 時規皮帶輪 MXL TIMING PULLEYS <PULLEYS MXL>

	<b>Tooth Shape :</b> 	Type	Material	Treatment	Flange	Flange Treatment
		PLAAA	A7075	Anodize	A6061	Anodize
		PLAEA		Electroless nickel		Electroless nickel
		PLS	1045	—	1045	—
PLSS	SUS303	—	A6061	Anodize		



Type	Catalog No.			Bore configuration	Bore dh7		Bore W only (1mm Increment)		P.D	O.D	D	F	E
	No.of teeth	Teeth Width Code	Pulley Shapes		U.T.TG Hole	W Hole	Z	J					
PLAAA PLAEA PLS PLSS	14	MXL006 A:6 W:10 L:16.5	DF	U	3 · 4	—	—	—	9.06	8.55	12	12	6
	15				3 · 4				9.07	9.19			
	16				3 · 4 · 5				10.35	9.84			
	17				3 · 4 · 5				11	10.49			
	18				3 · 4 · 5				11.64	11.14			
	19				3 · 4 · 5				12.29	11.78			
	20				4 · 5				12.94	12.43			
	21				4 · 5				13.58	13.07			
	22				4 · 5				14.23	13.72			
	23				4 ~ 7				14.88	14.37			
	24	4 ~ 7	15.52	15.02									
	25	4 ~ 7	16.17	15.66									
	26	4 ~ 8	16.82	16.31									
	27	4 ~ 8	17.46	16.96									
	28	4 ~ 8	18.11	17.6									
	30	4 ~ 8	19.4	18.9									
	32	4 ~ 8	20.7	20.19									
	34	4 ~ 8	21.99	21.48									
	36	5 ~ 10	23.29	22.78									
	38	5 ~ 10	24.58	24.07									
	40	5 ~ 10	25.87	25.36									
42	5 ~ 10	27.17	26.66										
44	5 ~ 12	28.46	27.95										
46	5 ~ 12	29.75	29.24										
48	5 ~ 13	31.05	30.54										
50	5 ~ 13	32.34	31.84										
60	5 ~ 16	38.81	38.3										
72	5 ~ 18	45.57	46.06										

U圓孔(aperture)      T圓孔(aperture)+攻牙(TAP)      TG NEWS JIS KEY WAY+TAP      W SHAP (軸形孔)  
TG 新JIS鍵槽+攻牙



Order TYPE — Catalog No. — Bore configuration  
 訂貨代號 PLAA — 30MXL008BF — T8

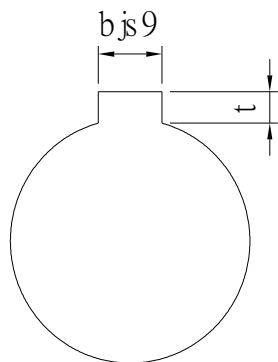
PS1 : if you need another exceptional to process the specifications form, please contact us.  
 PS2 : Bore,Key Groove & Set Screw match,Please refer to 【Core & Kew Groove & Set Screw Design Form】 .



# Core & Key Groove & Set Screw Design Form

## Core&Key Groove Dimension Form

dH7	Key Groove Width bjs9		Depth	tolerance
8	3	±0.0125	1.4	+ 0.1 0
9				
10				
11	4	±0.015	1.8	
12				
13				
14	5	±0.015	2.3	
15				
16				
17				
18	6	±0.015	2.8	
19				
20				
21				
22	8	±0.018	3.3	+ 0.2 0
23				
24				
25				
26				
28				
29				
30				
31				
32				
33	10	±0.0215	3.8	
34				
35				
38				
40	12	±0.0215	3.8	
42				
43				
44				
45	14	±0.0215	3.8	
46				
47				
48				
50				
50				



## Core&Set Screw Form

dH7	M
4	M3
5	
6	
6.35	
7	
8	M4
9	
10	
11	
12	M5
13	
14	
15	
16	
17	M6
18	
19	
20	
21	
22	
23	
24	
25	
26	
28	M8
29	
30	
31	
32	
33	
34	
35	
37	M10
38	
40	
42	
43	
44	
45	
46	
47	
48	
50	
52	
55	
57	
60	