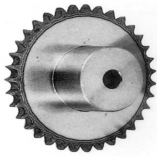
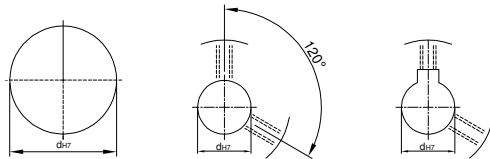


鍊齒輪 SPROKET RS100

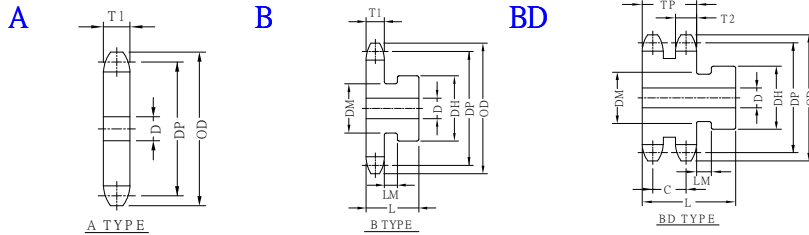


U圓孔(aperture) T圓孔(aperture)+攻牙(TAP) TG NEWS JIS KEY WAY+TAP
 TG 新JIS鍵槽+攻牙



TYPE	Material
SPS	1045 tooth tip:induction hardening
SPSS	SUS303

SPROCKETS SHAPES :



1 1/4" PITCH (31.75mm) T1=17.6 T2=17 TP=52.8 C=35.8

TYPE	Catalog No.			A SHAPES		B SHAPES					BD SHAPES				DP	OD		
	Number of Teeth	Teeth Size	Shapes	Bore D	Compend Weight kg	Bore D		DH	DM	L	Compend Weight kg	Bore D		DH			L	Compend Weight kg
						minimum	maximum					minimum	maximum					
SPS SPSS	9	RS100	A	19	1.09	21	40	72	60	55	1.57	25	46	70	80	3.37	92.83	106
	10			19	1.33	22	43	83	70	55	2.36	25	55	80	80	4.25	112.70	127
	11			19	1.58	22	50	92	80	55	2.96	25	60	90	80	5.07	122.67	138
	12			19	1.86	22	57	94	55	3.53	25	66	100	80	6.15	132.67	148	
	13			1"	2.16	22	66	98	55	3.98	25	76	110	80	7.32	142.68	158	
	14			1"	2.48	22	66	98	55	4.30	25	83	120	80	8.60	152.71	168	
	15			1"	2.82	22	66	98	55	4.65	25	75	117	80	9.97	162.74	179	
	16			1"	3.19	22	75	107	55	5.38	25	75	117	80	10.9	172.79	189	
	17			1"	3.58	22	75	107	55	5.77	25	75	117	80	12.0	182.84	199	
	18			1"	3.94	26	75	107	55	6.08	25	75	117	90	14.1	192.90	209	
	19			1"	4.37	26	75	107	55	6.51	25	75	117	90	15.3	202.96	220	
	20			1"	4.82	26	75	107	60	6.96	25	75	117	90	16.6	213.03	230	
	21			1"	5.27	30	75	107	60	8.28	25	75	117	90	15.6	223.10	240	
	22			1"	5.76	30	75	107	60	8.77	25	75	117	90	16.6	233.17	250	
	23			1"	6.28	30	75	107	60	9.29	25	75	117	90	18.1	243.25	260	
	24			1"	6.82	30	75	107	60	9.83	25	75	117	90	19.2	253.32	270	
	25			1"	7.38	30	75	107	60	10.4	25	85	127	90	20.2	263.40	281	
	26			1"	7.97	30	75	107	60	11.0	25	85	127	90	21.4	273.49	291	
	27			1"	8.57	30	75	107	60	11.6	25	85	127	90	22.6	283.57	301	
	28			1"	9.85	30	75	107	60	12.9	25	85	127	90	25.1	303.75	321	
	29			1"	11.2	35	80	117	60	14.1	25	85	127	90	27.7	323.92	341	
	30			1"	12.6	35	80	117	60	15.6	25	85	127	90	30.0	344.11	362	
	31			1"	13.4	35	89	117	60	17.5	25	85	127	90	32.0	354.20	372	
	32			1"	14.2	35	89	117	60	18.3	25	85	127	90	33.5	364.29	382	
	33			1"	15.8	35	89	117	60	20.0	25	85	127	90	36.7	384.48	402	
	34			1"	17.5	35	89	117	60	21.7	25	85	127	100	42.3	404.67	422	
	35			1"	19.3	35	89	127	60	23.5	25	95	137	100	45.8	424.86	443	
	36			1"	21.2	35	89	127	60	25.4	25	95	137	100	48.0	445.06	463	
	37			1"	22.2	35	89	127	60	26.4	25	95	137	100	51.4	455.16	473	
	38			1"	25.3	35	89	127	60	29.4	25	95	137	100	57.4	485.45	503	
	39			1"	27.4	38	89	127	60	31.5	25	95	137	100	61.6	505.65	524	
	40			1"	32.0	38	103	147	65	39.7	25	103	147	100	70.5	546.05	564	
	41			1"	39.5	38	103	147	65	47.2	25	103	147	125	88.3	606.66	625	
	42			1"	46.4	38	103	147	65	54.2	25	103	147	125	88.3	657.17	675	
	43			1"	53.8	38	103	• 147	65	64.2	25	103	147	125	88.3	707.68	726	
	44			1"	57.0	38	103	• 147	65	67.2	25	103	147	125	88.3	727.89	746	
45	1"	61.8	38	103	• 147	70	72.0	25	103	147	125	88.3	758.20	777				
46	1"												808.71	827				
47	1"												859.23	878				
48	1"												909.75	928				
49	1"												970.39	989				

Order 訂貨代號 TYPE **SPSD** Catalog No. **20RS100B** Bore configuration **TG10**

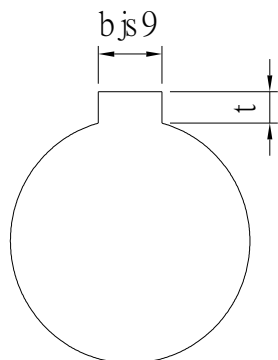
PS1 : if you need another exceptional to process the specifications form, please contact us.
 PS2 : Bore,Key Groove & Set Screw match,Please refer to **【Core & Kew Groove & Set Screw Design Form】** .
 PS3 : when Bore D over 50,please contact us that what size of <Key Groove & Set Screw> you need.



Core & Key Groove & Set Screw Design Form

Core&Key Groove Dimension Form

dH7	Kew Groove Width bjs9		Depth	tolerance
8	3	±0.0125	1.4	+ 0.1 0
9				
10				
11	4	±0.015	1.8	
12				
13				
14	5	±0.015	2.3	
15				
16				
17				
18	6	±0.015	2.8	
19				
20				
21				
22	8	±0.018	3.3	+ 0.2 0
23				
24				
25				
26				
28				
29				
30				
31				
32				
33	10	±0.0215	3.8	
34				
35				
38				
40	12	±0.0215	3.8	
42				
43				
44				
45	14	±0.0215	3.8	
46				
47				
48				
50				
50				



Core&Set Screw Form

dH7	M
4	M3
5	
6	
6.35	
7	
8	M4
9	
10	
11	
12	M5
13	
14	
15	
16	
17	M6
18	
19	
20	
21	
22	
23	
24	
25	
26	
28	M8
29	
30	
31	
32	
33	
34	
35	
37	M10
38	
40	
42	
43	
44	
45	
46	
47	
48	
50	
52	
55	
57	
60	