

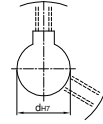
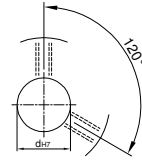
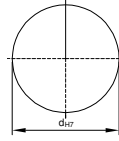


鍊齒輪 SPROKET RS120



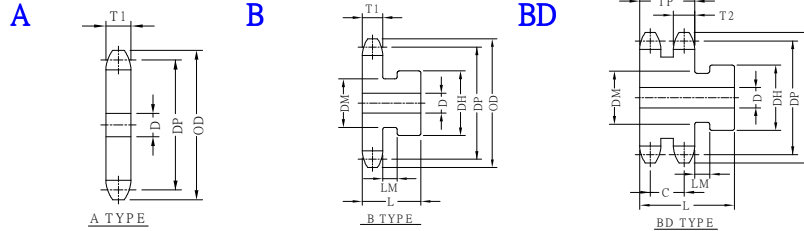
U圓孔(aperture)

T圓孔(aperture)+攻牙(TAP)

TG NEWS JIS KEY WAY+TAP
TG 新JIS鍵槽+攻牙

TYPE	Material
SPS	1045 tooth tip:induction hardening
SPSS	SUS303

SPROKETS SHAPES :



1 1/2" PITCH (38.1mm) T1=23.5 T2=22.7 TP =68.1 C=45.4

TYPE	Catalog No.			A SHAPES				B SHAPES				BD SHAPES				DP	OD	
	Number of Teeth	Teeth Size	Shapes	Bore D	Compend Weight kg	Bore D		DH	DM	L	Compend Weight kg	Bore D		DH	L			Compend Weight kg
						minimum	maximum					minimum	maximum					
SPS	9	RS120	A	1"	1.68	26	40	88	72.5	65	2.35	25	50	73	100	4.50	111.40	127
	10			1"	2.09	26	51	88	65	3.17	25	55	80	100	6.00	123.30	140	
	11			1"	2.54	26	60	100	65	4.05	25	60	90	100	7.43	135.24	153	
	12			1"	3.02	26	66	100	65	4.80	25	66	100	100	8.95	147.21	165	
	13			1"	3.55	26	66	100	65	5.33	25	80	115	100	11.1	159.20	177	
	14			1"	4.12	26	75	107	65	6.27	25	83	120	100	12.8	171.22	190	
	15			1"	4.70	30	75	107	65	7.80	25	83	120	100	14.1	183.25	202	
	16			1"	5.36	30	75	107	65	8.46	25	89	127	100	16.9	195.29	214	
	17			1"	6.06	30	75	107	65	9.15	25	89	127	100	18.8	207.35	227	
	18			1"	6.08	30	80	117	65	9.90	25	89	127	100	21.4	219.41	239	
	19		1"	7.58	30	80	117	65	10.7	25	89	127	100	23.5	231.48	251		
	20		1"	8.41	30	80	117	65	12.1	25	89	127	100	25.8	243.55	263		
	21		1"	9.28	30	80	117	70	13.0	25	89	127	100	28.2	255.63	276		
	22		1"	10.1	35	80	117	70	13.8	25	89	127	100	26.5	267.72	288		
	23		1"	11.1	35	80	117	70	14.7	25	89	127	100	28.3	279.80	300		
	24		1"	12.1	35	80	117	70	15.7	25	89	127	100	31.3	291.90	312		
	25		1"	13.1	35	80	127	70	16.7	25	89	127	100	33.3	303.99	324		
	SPSS		26	B	1"	14.2	35	89	127	70	17.8	25	95	137	100	35.4	316.09	337
	27		1"		15.3	35	89	127	70	18.9	25	95	137	100	37.6	328.19	349	
	28		1"		16.5	38	89	127	70	21.5	25	95	137	100	39.8	340.29	361	
	30		1"		18.9	38	89	127	70	24.0	25	95	137	100	44.6	364.50	385	
	32		1"		21.5	38	89	127	70	26.6	25	95	137	100	49.7	388.71	410	
	35		1"		25.8	38	89	127	70	30.8	25	95	137	100	58.0	425.04	446	
	36		1"		27.3	38	95	137	70	32.3	25	95	137	100	60.9	437.15	458	
	38		1"		30.4	38	95	137	70	35.5	25	95	137	100	67.0	461.38	483	
40	1"	33.7	38		95	137	70	40.7	25	95	137	140	82.7	485.60	507			
42	1"	37.2	38		95	137	70	44.2	25	95	137	140	89.5	509.84	531			
45	1"	42.7	38	95	137	75	49.7	25	103	147	140	100	546.19	568				
48	1"	48.7	38	95	137	75	55.6	25	103	147	140	112	582.54	604				
50	1"	52.8	38	95	137	75	59.8	25	103	147	140	120	606.78	628				
54	1"	61.6	38	95	137	75	71.1	25	110	157	140	137	655.26	677				
60	1"	76.1	38	103	147	75	88.5	25	110	157	160	169	727.99	750				
65	1"	89.3	38	103	147	80	102	25					788.60	811				
70	1"	104	38	103	147	80	118	25					849.22	871				
75	1"	119	38	103	147	80	133	25					909.84	932				

Order TYPE — Catalog No. — Bore configuration
 訂貨代號 SPSS — 20RS120B — TG10

PS1 : if you need another exceptional to process the specifications form, please contact us.

PS2 : Bore,Key Groove & Set Screw match,Please refer to 【Core & Key Groove & Set Screw Design Form】 .

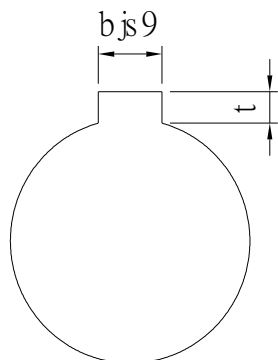
PS3 : when Bore D over 50,please contact us that what size of <Key Groove & Set Screw> you need.



Core & Key Groove & Set Screw Design Form

Core&Key Groove Dimension Form

dH7	Key Groove Width bjs9		Depth	tolerance
8	3	±0.0125	1.4	+ 0.1 0
9				
10				
11	4	±0.015	1.8	
12				
13				
14	5	±0.015	2.3	
15				
16				
17				
18	6	±0.015	2.8	
19				
20				
21				
22	8	±0.018	3.3	+ 0.2 0
23				
24				
25				
26				
28				
29				
30				
31				
32				
33	10	±0.0215	3.8	
34				
35				
38				
40	12	±0.0215	3.8	
42				
43				
44				
45	14	±0.0215	3.8	
46				
47				
48				
50				
50				



Core&Set Screw Form

dH7	M
4	M3
5	
6	
6.35	
7	
8	M4
9	
10	
11	
12	M5
13	
14	
15	
16	
17	M6
18	
19	
20	
21	
22	
23	
24	
25	
26	
28	M8
29	
30	
31	
32	
33	
34	
35	
37	M10
38	
40	
42	
43	
44	
45	
46	
47	
48	
50	
52	
55	
57	
60	