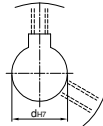
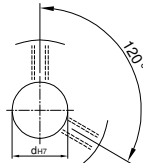
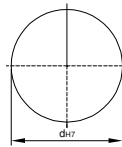
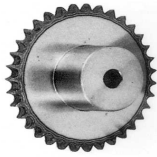


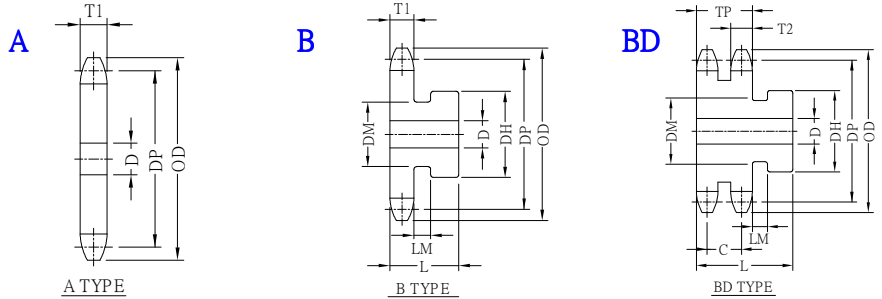
## 鍊齒輪 SPK RS160

U圓孔(aperture)      T圓孔(aperture)+攻牙(TAP)      TG NEWS JIS KEY WAY+TAP  
 TG 新JIS鍵槽+攻牙



TYPE	Material
SPS	1045 tooth tip:induction hardening
SPSS	SUS303

### SPROCKETS SHAPES :



**2" PITCH (50.8mm)      T1=29.4 T2=28.4 TP =86.9 C=58.5**

TYPE	Catalog No.			A SHAPES		B SHAPES					BD SHAPES		DP	OD			
	Number of Teeth	Teeth Size	Shapes	Bore D	Compend Weight kg	Bore D		DH	DM	L	Compend Weight kg	Bore D			DH		
						minimum	maximum										
SPS SPSS	10	RS160	A	1"	4.61	30	70	127	112	85	6.58	30	105	164.39	187		
	11			1"	5.60	30	80	143	128	85	8.12	30	121	180.31	204		
	12			1"	6.68	30	89	144	85	9.70	30	138	196.28	220			
	13			1"	7.86	30	95	150	85	12.3	30	155	212.27	237			
	14			1"	9.13	30	95	150	85	13.5	30	171	228.30	253			
	15			1"	10.5	38	95	150	85	14.9	30	187	224.33	269			
	16			1"	12.0	38	103	150	85	17.1	30	204	260.39	286			
	17			1"	13.5	38	103	150	85	18.6	30	220	276.46	302			
	18			1"	15.2	38	103	150	85	20.3	30	237	292.55	319			
	19			1"	16.9	38	103	150	85	22.0	30	253	308.64	335			
	20			1"	18.7	38	103	150	85	23.9	30	269	324.74	351			
	21			1"	20.7	38	103	147	75	25.8	30	285	340.84	368			
	22			1"	22.7	38	118	167	75	30.9	30	302	356.96	384			
	23			1"	24.9						30	318	373.07	400			
	24			1"	27.0	B											
	25		1"	29.3	38		118	167	75	35.2	30	334	389.19	416			
	26		1"	31.7	38		118	167	75	40.0			367	421.45	449		
	27		1"	34.4									383	437.58	465		
	28		1"	37.0									399	453.72	481		
	30		1"	42.3	38		118	167	75	53.7			432	485.99	514		
	32		1"	48.1									464	518.28	546		
	35		1"	57.6	38		118	167	80	69.0			513	566.71	595		
	36		1"											582.87	611		
	38		1"											561	615.17	644	
	40		1"											594	647.47	676	
	42		1"		BD												
	45		1"				40	132	• 167	80	88.5			626	679.78	708	
	48		1"				40	132	• 187	90	115			675	728.25	757	
	50		1"				40	132	• 187	90	128			723	776.72	806	
	54		1"			40	132	• 187	90	138			756	809.04	838		
58	1"		40	132		• 187	90	158			821	873.68	903				
60	1"		40	132		• 187	90	189			918	970.65	1000				

Order TYPE — Catalog No. — Bore configuration  
 訂貨代號 SPSS — 20RS160B — TG10

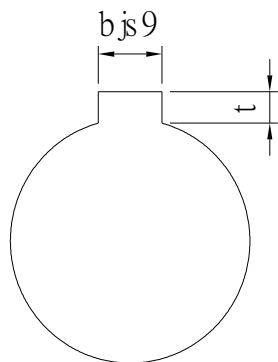
PS1 : if you need another exceptional to process the specifications form, please contact us.  
 PS2 : Bore,Key Groove & Set Screw match,Please refer to **【Core & Kew Groove & Set Screw Design Form】** .  
 PS3 : when Bore D over 50,please contact us that what size of <Key Groove & Set Screw> you need.



# Core & Key Groove & Set Screw Design Form

## Core&Key Groove Dimension Form

dH7	Kew Groove Width bjs9		Depth	tolerance
8	3	±0.0125	1.4	+ 0.1 0
9				
10				
11	4	±0.015	1.8	
12				
13				
14	5	±0.015	2.3	
15				
16				
17				
18	6	±0.015	2.8	
19				
20				
21				
22	8	±0.018	3.3	+ 0.2 0
23				
24				
25				
26				
28				
29				
30				
31				
32				
33	10	±0.0215	3.8	
34				
35				
38				
40	12	±0.0215	3.8	
42				
43				
44				
45	14	±0.0215	3.8	
46				
47				
48				
50				
50				



## Core&Set Screw Form

dH7	M
4	M3
5	
6	
6.35	
7	
8	M4
9	
10	
11	
12	M5
13	
14	
15	
16	
17	M6
18	
19	
20	
21	
22	
23	
24	
25	
26	
28	M8
29	
30	
31	
32	
33	
34	
35	
37	M10
38	
40	
42	
43	
44	
45	
46	
47	
48	
50	
52	
55	
57	
60	