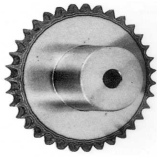
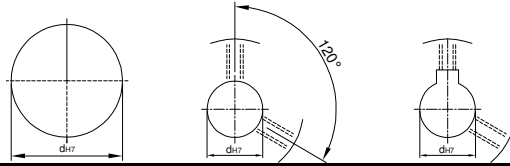


鍊齒輪 SPK RS180

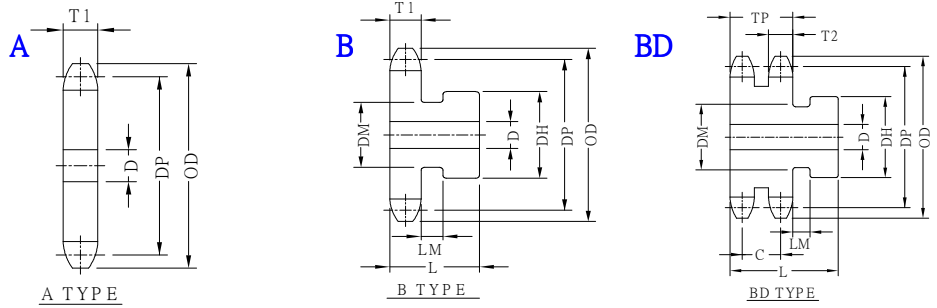


U圓孔(aperture) T圓孔(aperture)+攻牙(TAP) TG NEWS JIS KEY WAY+TAP
 TG 新JIS鍵槽+攻牙



TYPE	Material
SPS	045 tooth tip:induction hardenin
SPSS	SUS303

SPROCKETS SHAPES:



1/4" PITCH (57.15mm)

TYPE	Catalog No.			A HSAPES		B HSAPES				B D SHAPES				DP	OD						
	Number of Teeth	Teeth Size	Shapes	Bore D	Compend Weight kg	Bore D		DH	DM	Compend Weight kg	Bore D		DH			L	Compend Weight kg				
						minimum	maximum				minimum	maximum									
SPS SPSS	11	RS180	A	43	7.8	43	75	110	55	93						202.85	229				
	12			43	9.3	43	85	130	65	126						220.81	248				
	13			43	10.9	43	95	150	75	166						238.81	266				
	14			43	12.6	43	105	170	80	209						256.83	285				
	15			43	14.5	43	110	180	80	238						274.87	303				
	16			43	16.5	43	110	180	80	259						292.94	322				
	17			43	18.7	43	115	180	80	281						311.01	340				
	18			43	21.5	43	115	180	80	299						329.11	358				
	19			43	23.9	43	115	180	80	324						347.21	377				
	20			43	26.6	43	115	180	80	350						365.33	395				
	21		63	28.9	B								63	120	190	85	38.8	383.45	413		
	22		63	31.7										63	120	190	85	41.7	401.57	432	
	24		63	37.9										63	125	200	90	50.2	437.84	468	
	25		63	41.2										63	125	200	90	53.5	455.99	487	
	26		63	44.6										63	125	200	90	56.8	474.13	505	
	30		63	59.6										63	135	220	110	81.1	546.74	578	
	35		63	81.3										63	135	220	110	102.9	637.56	669	
	40		63	106.4		BD								63	150	240	125	137.5	728.41	760	
	45		63	134.8											63	150	240	125	166.1	819.28	852
	48		63	153.5											63	150	240	125	184.9	873.81	906
60	63	240.2										63	150	240	125	272.2	1091.98	1125			

Order TYPE — Catalog No. — Bore configuration
 訂貨代號 SPSS — 20RS180B — TG10

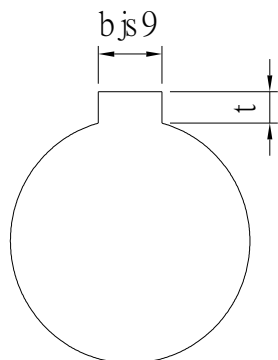
PS1 : if you need another exceptional to process the specifications form, please contact us.
 PS2 : Bore,Key Groove & Set Screw match,Please refer to 【Core & Key Groove & Set Screw Design Form】.
 PS3 : when Bore D over 50,please contact us that what size of <Key Groove & Set Screw> you need.



Core & Key Groove & Set Screw Design Form

Core&Key Groove Dimension Form

dH7	Key Groove Width bjs9		Depth	tolerance
8	3	±0.0125	1.4	+ 0.1 0
9				
10				
11	4	±0.015	1.8	
12				
13				
14	5	±0.015	2.3	
15				
16				
17				
18	6	±0.015	2.8	
19				
20				
21				
22	8	±0.018	3.3	+ 0.2 0
23				
24				
25				
26				
28				
29				
30				
31				
32				
33	10	±0.0215	3.8	
34				
35				
38				
40	12	±0.0215	3.8	
42				
43				
44				
45	14	±0.0215	3.8	
46				
47				
48				
49				
50				



Core&Set Screw Form

dH7	M
4	M3
5	
6	
6.35	
7	
8	M4
9	
10	
11	
12	M5
13	
14	
15	
16	
17	M6
18	
19	
20	
21	
22	
23	
24	
25	
26	
28	M8
29	
30	
31	
32	
33	
34	
35	
37	M10
38	
40	
42	
43	
44	
45	
46	
47	
48	
50	
52	
55	
57	
60	