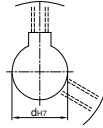
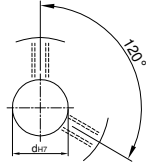
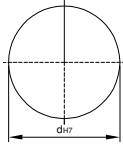
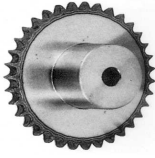


## 鍊齒輪 SPK RS200

U圓孔(aperture)

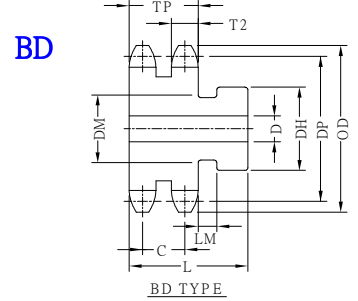
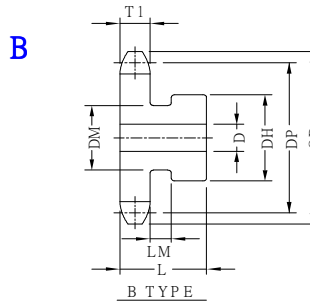
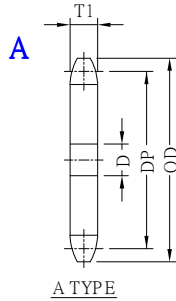
T圓孔(aperture)+攻牙(TAP)

TG NEWS JIS KEY WAY+TAP  
TG 新JIS鍵槽+攻牙



TYPE	Material
SPS	045 tooth tip:induction hardening
SPSS	SUS303

### SPROCKETS SHAPES:



### 1/2" PITCH (63.50mm)

TYPE	Catalog No.			A HSAPES		B HSAPES				B D SHAPES				DP	OD					
	Number of Teeth	Teeth Size	Shapes	Bore D	Compend Weight kg	Bore D		DH	DM	Compend Weight kg	Bore D		DH			L	Compend Weight kg			
						minimum	maximum				minimum	maximum								
SPS SPSS	11	RS200	A	43	10.4	43	80	130	65	13.4						225.39	254			
	12			43	12.3	43	90	150	75	17.8						245.34	275			
	13			43	14.5	43	100	170	80	22.4						265.34	296			
	14			43	16.8	43	110	180	80	25.7						285.37	316			
	15			43	19.3	43	115	180	80	28.3						305.42	337			
	16			43	22.5	43	115	180	80	30.3						325.49	357			
	17			43	25.4	43	120	190	85	35.3						345.58	378			
	18			43	28.5	43	120	190	85	38.4						365.68	398			
	19			63	31.3									63	125	200	90	42.9	385.79	419
	20		63	34.7									63	125	200	90	46.4	405.92	439	
	21		63	38.3	B								63	135	220	110	52.4	426.05	459	
	22		63	42.1										63	135	220	110	62.2	446.20	480
	24		63	50.3										63	140	230	110	73.1	486.49	520
	25		63	54.6										63	140	230	110	77.5	506.65	541
	26		63	59.1										63	140	230	110	82.0	526.81	561
	30		63	78.6										63	150	240	125	109.1	607.49	642
	35		63	107.6	BD								63	150	240	125	138.0	708.39	744	
	40		63	140.7										63	170	270	140	186.1	809.34	845
	45	63	178.3										63	170	270	140	223.9	910.31	946	
	48	68	202.8										68	170	270	140	248.2	970.90	1007	
60	68	317.3										68	170	270	140	363.2	1213.31	1250		

Order TYPE — Catalog No. — Bore configuration  
 訂貨代號 SPSS — 20RS200B — TG10

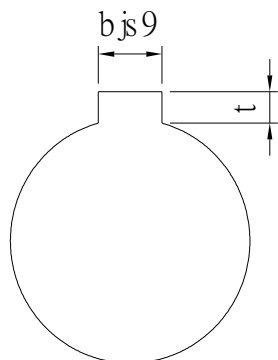
PS1 : if you need another exceptional to process the specifications form, please contact us.  
 PS2 : Bore,Key Groove & Set Screw match,Please refer to 【Core & Key Groove & Set Screw Design Form】.  
 PS3 : when Bore D over 50,please contact us that what size of <Key Groove & Set Screw> you need.



# Core & Key Groove & Set Screw Design Form

## Core&Key Groove Dimension Form

dH7	Key Groove Width bjs9		Depth	tolerance
8	3	±0.0125	1.4	+ 0.1 0
9				
10				
11	4	±0.015	1.8	
12				
13				
14	5	±0.015	2.3	
15				
16				
17				
18	6	±0.015	2.8	
19				
20				
21				
22	8	±0.018	3.3	+ 0.2 0
23				
24				
25				
26				
28				
29				
30				
31				
32				
33	10	±0.0215	3.8	
34				
35				
38				
40	12	±0.0215	3.8	
42				
43				
44				
45	14	±0.0215	3.8	
46				
47				
48				
50				
50				



## Core&Set Screw Form

dH7	M
4	M3
5	
6	
6.35	
7	
8	M4
9	
10	
11	
12	M5
13	
14	
15	
16	
17	M6
18	
19	
20	
21	
22	
23	
24	
25	
26	
28	M8
29	
30	
31	
32	
33	
34	
35	
37	M10
38	
40	
42	
43	
44	
45	
46	
47	
48	
50	
52	
55	
57	
60	