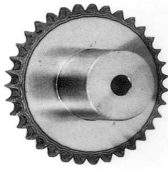


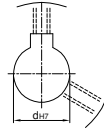
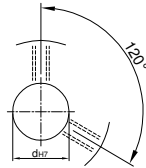
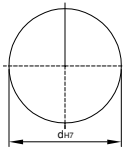
鍊齒輪 SPROCKET RS25



U圓孔(aperture)

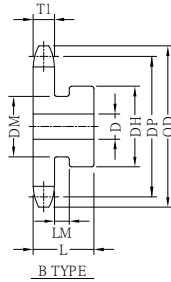
T圓孔(aperture)+攻牙(TAP)

TG NEWS JIS KEY WAY+TAP
TG 新JIS鍵槽+攻牙



TYPE	Material
SPS	1045
SPSS	SUS303

SPROCKETS SHAPES : B



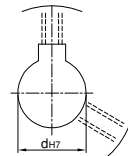
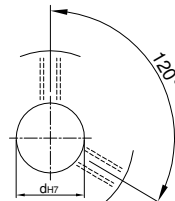
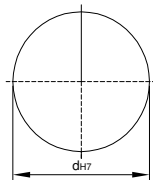
1/4" PITCH (6.35mm) LM : 3.0mm T1=2.8

TYPE	Catalog No.			Bore D	OD	PD	DH	DM	L	TYPE	Catalog No.			Bore D	OD	PD	DH	L
	Number of Teeth	Teeth Size	Shapes								Number of Teeth	Teeth Size	Shapes					
SPS	9	RS25	B	6	23	18.56	14	11	16	SPS	37	RS25	B	10	78	74.88	40	20
	10			6	24	20.55	16	13	16		38			10	80	76.90	40	20
	11			6	25	22.54	18	15	16		39			10	82	78.91	40	20
	12			6	28	24.53	20	17	16		40			10	84	80.93	45	22
	13			6	30	26.53	22	19	16		41			10	87	92.95	45	22
	14			6	32	28.54	24	21	16		42			10	89	84.97	45	22
	15			6	34	30.54	24	21	16		43			10	91	86.99	45	22
	16			6	36	32.55	25	21	16		44			10	93	88.01	45	22
	17			6	38	34.56	25	21	16		45			10	95	91.03	50	22
	18			6	40	36.37	25	21	16		46			10	97	93.05	50	22
SPSS	19	RS25	B	6	42	38.58	28	18	16	SPSS	47	RS25	B	10	99	95.07	50	22
	20			8	44	40.59	28	18	18		48			10	101	97.09	50	22
	21			8	46	42.61	28	18	18		49			10	103	99.11	50	22
	22			8	48	44.62	30	18	18		50			10	105	101.15	50	22
	23			8	50	46.63	30	18	18		51			10	107	103.15	50	22
	24			8	52	48.65	30	18	18		52			10	109	105.17	50	22
	25			8	54	50.66	35	18	18		53			10	111	107.19	50	22
	26			8	56	52.68	35	18	18		54			10	113	109.21	50	22
	27			8	58	54.70	35	18	18		55			10	115	111.23	50	22
	28			8	60	56.71	35	18	18		56			10	117	113.25	50	22
	29			8	62	58.73	35	18	18		57			10	119	115.27	50	22
	30			8	64	60.75	40	20	20		58			10	121	117.29	50	22
	31			8	66	62.77	40	20	20		59			10	123	119.31	50	22
	32			8	68	64.78	40	20	20		60			10	125	121.33	50	22
	33			8	70	66.80	40	20	20		65			10	135	131.43	50	30
	34			8	72	68.82	40	20	20		70			10	145	141.54	50	30
	35			10	74	70.84	40	20	20		75			10	155	151.64	50	30
	36			10	76	72.88	40	20	20		80			10	165	161.74	50	30

U圓孔(aperture)

T圓孔(aperture)+攻牙(TAP)

TG NEWS JIS KEY WAY+TAP
TG 新JIS鍵槽+攻牙



Order
訂貨代號

TYPE
SPSD

Catalog No.
20RS25B

Bore configuration
TG10

PS1 : if you need another exceptional to process the specifications form, please contact us.

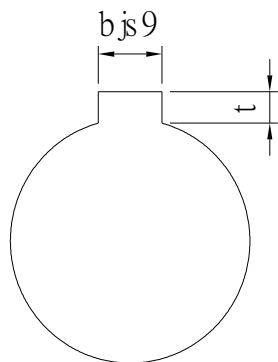
PS2 : Bore,Key Groove & Set Screw match,Please refer to 【Core & Kew Groove & Set Screw Design Form】 .



Core & Key Groove & Set Screw Design Form

Core&Key Groove Dimension Form

dH7	Key Groove Width bjs9		Depth	tolerance
8	3	±0.0125	1.4	+ 0.1 0
9				
10				
11	4	±0.015	1.8	
12				
13				
14	5	±0.015	2.3	
15				
16				
17				
18	6	±0.015	2.8	
19				
20				
21				
22	8	±0.018	3.3	+ 0.2 0
23				
24				
25				
26				
28				
29				
30				
31				
32				
33	10	±0.0215	3.8	
34				
35				
38				
40	12	±0.0215	3.8	
42				
43				
44				
45	14	±0.0215	3.8	
46				
47				
48				
50				
50				



Core&Set Screw Form

dH7	M
4	M3
5	
6	
6.35	
7	
8	M4
9	
10	
11	
12	M5
13	
14	
15	
16	
17	M6
18	
19	
20	
21	
22	
23	
24	
25	
26	
28	M8
29	
30	
31	
32	
33	
34	
35	
37	
38	
40	M10
42	
43	
44	
45	
46	
47	
48	
50	
52	
55	
57	
60	