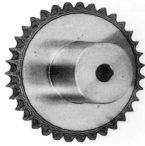
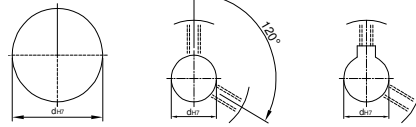




鍊齒輪 SPROCKET RS35

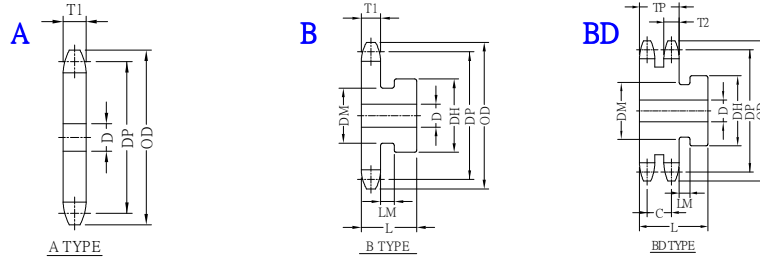


U圓孔(aperture) T圓孔(aperture)+攻牙(TAP) TG NEWS JIS KEY WAY+TAP
TG 新JIS鍵槽+攻牙



TYPE	Material
SPS	045 tooth tip:induction hardenit
SPSS	SUS303

SPROCKETS SHAPES :



3/8" PITCH (9.525mm) T1=4.3 T2=4.1 TP=14.2 C=10.13

TYPE	Catalog No.			A SHAPES		B SHAPES					BD SHAPES				DP	OD			
	Number of Teeth	Teeth Size	Shapes	Bore D	Compend Weight kg	Bore D		DH	DM	L	Compend Weight kg	Bore D		DH			L	Compend Weight kg	
						minimum	maximum					minimum	maximum						
SPS SPSS	9	RS35	A	10		8	11	22	17	20	0.05						27.85	32	
	10			10	0.02	8	12	25	20	20	0.07							30.82	35
	11			10	0.02	8	14	27	23	20	0.08							33.81	38
	12			10	0.03	8	16.5	30	26	20	0.11	10	15	28	30	0.14	36.80	41	
	13			10	0.04	8	18	32	29	20	0.12	10	17	30	30	0.17	39.80	44	
	14			10	0.05	10	18		32	20	0.14	10	20	34	30	0.21	42.81	47	
	15			10	0.05	10	19		35	20	0.16	10	25	35	30	0.25	45.82	51	
	16			10	0.06	10	20		37	20	0.18	12	25	38	30	0.29	48.52	54	
	17			10	0.07	10	24		41	20	0.22	12	25	40	30	0.34	51.84	57	
	18			10	0.08	10	25		44	20	0.25	12	28	44	30	0.45	54.85	60	
	19			10	0.08	10	28.5		47	20	0.28	12	30	47	30	0.51	57.87	63	
	20			10	0.09	10	30		50	20	0.32	12	32	50	30	0.64	60.89	66	
	21			10	0.10	10	32		53	20	0.36	12	32	53	30	0.67	63.91	69	
	22			10	0.11	10	32		56	20	0.40	12	35	56	30	0.78	66.93	72	
	23			10	0.13	10	38		60	20	0.46	12	35	58	30	0.82	69.95	75	
	24			16	0.14	12	32		55	25	0.43	12	38	60	30	0.92	72.97	78	
	25			16	0.15	12	32		55	25	0.44	12	38	60	30	0.96	76.00	81	
	26			16	0.16	12	32		55	25	0.45	12	38	60	30	1.22	79.02	84	
	27			16	0.17	12	32		55	25	0.46	12	38	70	30	1.26	82.05	87	
	28			16	0.19	12	32		55	25	0.48	12	45	70	30	1.30	85.07	90	
	29			16	0.20	12	32		60	25	0.49	12	45	70	30	1.34	88.10	93	
	30			16	0.21	12	32		60	25	0.50	12	41	75	35	1.39	91.12	96	
	31			16	0.23	12	32		60	25	0.52	15	41	75	35	1.43	94.15	99	
	32			16	0.24	12	32		60	25	0.53	15	41	80	35	1.48	97.18	102	
	33			16	0.26	12	32		60	25	0.55	15	55	80	35	1.53	100.20	105	
	34			19	0.28	12	32		60	25	0.57	15	55	80	35	1.58	103.23	109	
	35			19	0.29	12	32		60	25	0.58	15	55	80	35	1.63	106.26	112	
	36			19	0.31	12	32		60	25	0.60	15	65	90	35	1.72	109.29	115	
	37			19	0.33	12	42		60	25	0.81	15	65	90	35	1.85	112.31	118	
	38			19	0.35	12	42		60	25	0.83	15	65	90	35	1.98	115.34	121	
	39		19	0.36	12	42		60	25	0.85	15	65	90	35	2.20	118.37	124		
	40		19	0.38	12	42		60	25	0.87	15	75	100	35	2.50	121.40	127		
	41		19	0.40	12	42		60	25	0.87						124.43	130		
	42		19	0.42	12	42		60	25	0.89						127.46	133		
	43		19	0.44	12	42		60	25	0.91						130.49	136		
	44		19	0.46	15	42		60	25	0.93						133.52	139		
	45		19	0.48	15	42		60	25	0.96						136.55	142		
	46		19													139.58	145		
	47		19													142.61	148		
	48		19	0.55	15	42		60	25	1.02						145.64	151		
	49		19													148.67	154		
	50		19	0.60	15	42		60	25	1.07						151.70	157		
	51		19													154.73	160		
	52		19													157.75	163		
	53		19													160.78	166		
	54		19	0.70	16	42		63	25	1.17						163.81	169		
	55		19		16	42		63	25	1.24						166.85	172		
	56		19													169.88	175		
	57		19													172.91	178		
	58		19													175.94	181		
	59		19													178.97	184		
	60		19	0.87	16	42		63	30	1.34						182.00	187		

Order TYPE — Catalog No. — Bore configuration
 訂貨代號 SPSS — 20RS35B — TG10

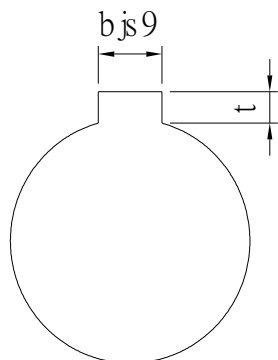
PS1 : if you need another exceptional to process the specifications form, please contact us.
 PS2 : Bore,Key Groove & Set Screw match,Please refer to 【Core & Key Groove & Set Screw Design Form】.
 PS3 : when Bore D over 50,please contact us that what size of <Key Groove & Set Screw> you need.



Core & Key Groove & Set Screw Design Form

Core&Key Groove Dimension Form

dH7	Key Groove Width bjs9		Depth	tolerance
8	3	±0.0125	1.4	+ 0.1 0
9				
10				
11	4	±0.015	1.8	
12				
13				
14	5	±0.015	2.3	
15				
16				
17				
18	6	±0.015	2.8	
19				
20				
21				
22	8	±0.018	3.3	+ 0.2 0
23				
24				
25				
26				
28				
29				
30				
31				
32				
33	10	±0.0215	3.8	
34				
35				
38				
40	12	±0.0215	3.8	
42				
43				
44				
45	14	±0.0215	3.8	
46				
47				
48				
49				
50				



Core&Set Screw Form

dH7	M
4	M3
5	
6	
6.35	
7	
8	M4
9	
10	
11	
12	M5
13	
14	
15	
16	
17	M6
18	
19	
20	
21	
22	
23	
24	
25	
26	
28	M8
29	
30	
31	
32	
33	
34	
35	
37	M10
38	
40	
42	
43	
44	
45	
46	
47	
48	
50	
52	
55	
57	
60	