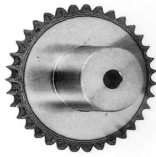


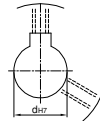
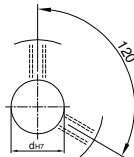
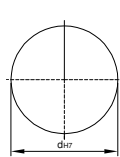


鍊齒輪 SPROKET RS60



U圓孔(aperture)

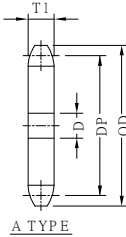
T圓孔(aperture)+攻牙(TAP)

TG NEWS JIS KEY WAY+TAP
TG 新JIS鍵槽+攻牙

TYPE	Material
SPS	1045 tooth tip:induction hardening
SPSS	SUS303

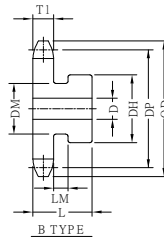
SPROKETS SHAPES :

A



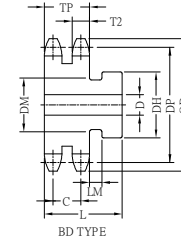
A TYPE

B



B TYPE

BD



BD TYPE

3/4" PITCH (19.05mm)

T1=11.7 T2=11.3 TP=34.1 C=22.8

TYPE	Catalog No.			A SHAPES		B SHAPES					BD SHAPES					DP	OD		
	Number of Teeth	Teeth Size	Shapes	Bore D	Compend Weight kg	Bore D		DH	DM	L	Compend Weight kg	Bore D		DH	L			Compend Weight kg	
						minimum	maximum					minimum	maximum						
SPS	9	RS60	A	16	0.20	12	24.5	43	32	35	0.39						55.70	63	
	10			16	0.26	12	30	49	37	35	0.48	16	20	35	55	0.66	61.65	70	
	11			16	0.31	12	32	55	45	35	0.58	16	25	44	55	0.88	67.62	76	
	12			16	0.37	12	32			54	35	0.67	16	30	50	55	1.10	73.60	83
	13			16	0.44	12	35			57	35	0.82	18	38	60	55	1.39	79.60	89
	14			16	0.51	12	39.5			65	35	0.95	18	45	66	55	1.81	85.61	95
	15			16	0.59	15	45.5			70	40	1.13	20	48	72	55	2.12	91.62	101
	16			19	0.67	15	47.5			70	40	1.30	20	51	78	55	2.47	97.65	107
	17			19	0.76	15	47.5			70	40	1.39	20	55	82	60	2.77	103.67	113
	18			19	0.85	15	55			70	40	2.00	20	60	90	60	3.23	109.71	119
	19			19	0.94	15	55			70	40	2.08	20	63	94	60	3.57	115.74	126
	20			19	1.04	15	55			80	40	2.19	20	66	100	60	3.94	121.78	132
	21			19	1.15	15	55			80	40	2.29	20	66	100	60	4.24	127.82	138
	22			19	1.26	15	55			80	40	2.41	20	66	100	60	4.55	133.86	144
	23			19	1.38	15	55			80	40	2.53	20	66	100	60	4.88	139.90	150
	24			19	1.51	15	55			80	40	2.65	20	83	100	60	5.81	145.95	156
	25			19	1.64	15	55			80	40	2.78	20	83	100	65	6.18	151.99	162
	26			19	1.77	15	55			80	45	2.91	20	83	107	65	6.55	158.04	168
	27			19	1.90	15	55			85	45	3.02	20	83	107	65	6.94	164.09	174
	28			19	2.04	18	55			85	45	3.16	25	83	107	65	7.34	170.14	180
	30			19	2.35	18	55			85	45	3.47	25	92	107	65	8.44	182.25	193
	32			19	2.68	18	55			85	45	3.79	25	89	107	65	9.28	194.35	205
	34			19	3.02	18	55			85	45	4.14	25					206.46	217
	35			19	3.21	18	55			85	45	4.32	25	89	107	65	10.8	212.52	223
	36			19	3.39	18	55			85	45	4.51	25	66	107	65	10.5	218.57	229
	38			19	3.78	18	55			87	45	4.90	25	66	107	65	11.6	230.69	241
	40			19	4.19	18	55			87	45	5.31	25	66	107	65	12.7	242.80	253
	42			1"	4.62	23	63			87	45	6.28	25	75	107	65	14.2	254.92	266
	44			1"	5.07	23	63			87	45	6.73	25					267.03	278
	45			1"	5.31	23	63			87	45	6.96	25	75	107	65	17.1	273.09	284
	48			1"	6.04	23	63			87	45	7.70	25	75	107	65	19.2	291.27	302
	50			1"	6.56	23	63			87	45	8.22	25	75	107	65	20.7	303.39	314
	54			1"	7.66	26	63			97	50	9.31	25	75	107	70	23.8	327.63	338
	60			1"	9.46	26	63			97	50	11.1	25	75	107	70	29.0	363.99	375
	65			1"	11.1	26	75			97	50	13.3	25	75	107	70	33.7	394.30	405
	70			1"	12.9	26	75			107	50	15.1	25	75	107	70	38.8	424.61	436
72	1"	13.6	26	75			107	50	15.8	25					436.73	448			
75	1"	14.8	26	75			107	55	17.0	25					454.92	466			
80	1"	16.8	26	80			117	55	19.8	25					485.23	496			
85	1"	19.0	26	80			117	55	22.0	25					515.54	527			
90	1"	21.3	26	80			117	55	24.3	25					545.85	557			
96	1"	24.2	26	80			117	55	27.2	25					582.23	593			

Order 訂貨代號 TYPE SPSD — Catalog No. 20RS60B — Bore configuration TG10

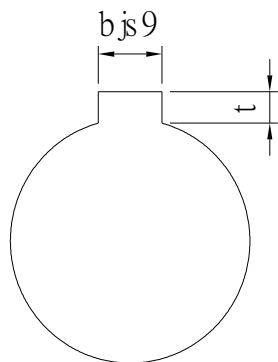
PS1 : if you need another exceptional to process the specifications form, please contact us.
 PS2 : Bore,Key Groove & Set Screw match,Please refer to 【Core & Kew Groove & Set Screw Design Form】 .
 PS3 : when Bore D over 50,please contact us that what size of <Key Groove & Set Screw> you need.



Core & Key Groove & Set Screw Design Form

Core&Key Groove Dimension Form

dH7	Kew Groove Width bjs9		Depth	tolerance
8	3	±0.0125	1.4	+ 0.1 0
9				
10				
11	4	±0.015	1.8	
12				
13				
14	5	±0.015	2.3	
15				
16				
17				
18	6	±0.015	2.8	
19				
20				
21				
22	8	±0.018	3.3	+ 0.2 0
23				
24				
25				
26				
28				
29				
30				
31				
32				
33	10	±0.0215	3.8	
34				
35				
38				
40	12	±0.0215	3.8	
42				
43				
44				
45	14	±0.0215	3.8	
46				
47				
48				
50				
50				



Core&Set Screw Form

dH7	M
4	M3
5	
6	
6.35	
7	
8	M4
9	
10	
11	
12	M5
13	
14	
15	
16	
17	M6
18	
19	
20	
21	
22	
23	
24	
25	
26	
28	M8
29	
30	
31	
32	
33	
34	
35	
37	M10
38	
40	
42	
43	
44	
45	
46	
47	
48	
50	
52	
55	
57	
60	