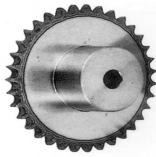
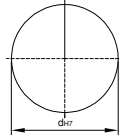




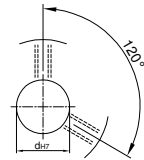
**鍊齒輪 SPROKET RS80**



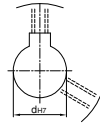
U圓孔(aperture)



T圓孔(aperture)+攻牙(TAP)



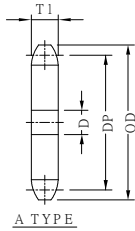
TG NEWS JIS KEY WAY+TAP  
TG 新JIS鍵槽+攻牙



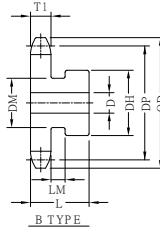
TYPE	Material
SPS	1045 tooth tip:induction hardening
SPSS	SUS303

SPROKETS SHAPES :

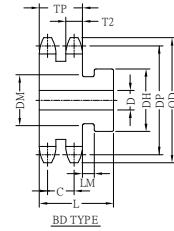
A



B



BD



**1" PITCH (25.4mm) T1=14.6 T2=14.1 TP =43.4 C=29.3**

TYPE	Catalog No.			A SHAPES		B SHAPES					BD SHAPES					DP	OD			
	Number of Teeth	Teeth Size	Shapes	Bore D	Compend Weight kg	Bore D		DH	DM	L	Compend Weight kg	Bore D		DH	L			Compend Weight kg		
						minimum	maximum					minimum	maximum							
SPS SPSS	9	RS80	A	19		17	32	58	48	45	0.86						74.26	85		
	10			19	0.58	17	32	66	56	45	0.96	20	35	58	70	1.73	82.20	93		
	11			19	0.71	17	38	72	64	45	1.23	20	38	60	70	2.02	90.16	102		
	12			19	0.83	21	45			72		45	1.46	20	46	69	70	2.49	98.14	110
	13			19	0.98	21	51			77		45	1.84	20	55	80	70	3.13	106.14	118
	14			19	1.13	21	51			80		45	1.99	20	59	88	70	3.73	114.15	127
	15			19	1.31	21	63			80		45	2.59	25	63	95	70	4.33	122.17	135
	16			19	1.49	21	63			80		45	2.77	25	66	100	70	5.36	130.20	143
	17			19	1.68	21	63			90		45	2.96	25	66	100	75	5.92	138.23	151
	18			19	1.89	21	63			90		45	3.17	25	83	120	75	7.29	146.27	159
	19			19	2.09	22	63			90		45	3.36	25	83	120	75	7.84	154.32	167
	20			19	2.31	22	63			90		45	3.59	25	92	130	75	8.90	162.37	176
	21			1"	2.55	22	63			90		50	3.82	25	92	130	75	9.57	170.42	184
	22			1"	2.79	25	75			90		50	4.79	25	80	117	75	8.67	178.48	192
	23			1"	3.05	25	75			90		50	5.06	25	80	117	80	9.19	186.54	200
	24			1"	3.33	25	75			95		50	5.33	25	80	117	80	10.5	194.60	208
	25			1"	3.61	25	75			95		50	5.62	25	80	117	80	11.0	202.66	216
	26			1"	3.91	25	75			97		50	5.92	25	80	117	80	11.6	210.72	224
	27		1"	4.22	25	75			97		50	6.23	25	80	117	80	12.2	218.79	233	
	28		1"	4.54	25	75			97		50	6.55	25	80	117	80	12.8	226.86	241	
	30		1"	5.22	25	75			97		50	7.23	25	80	117	80	14.1	243.00	257	
	32		1"	5.95	25	75			107		50	7.95	25	80	117	80	15.5	259.14	273	
	34		1"	6.72	25	75			107		50	8.72	25					275.29	289	
	35		1"	7.12	25	75			107		50	9.13	25	80	117	80	17.8	283.36	297	
	36		1"	7.52	30	75			107		50	10.3	25	80	117	80	18.6	291.43	306	
	38		1"	8.38	30	75			107		50	11.2	25	80	117	80	20.9	307.58	322	
	40		1"	9.29	30	75			107		50	12.1	25	80	117	90	23.6	323.74	338	
	42		1"	10.3	30	75			107		50	13.0	25	80	117	90	25.5	339.89	354	
	44		1"	11.3	30	75			107		50	14.0	25					356.04	370	
	45		1"	11.8	30	75			107		50	14.6	25	89	127	90	28.4	364.12	378	
	48		1"	13.4	30	75			107		50	16.2	25	89	127	90	31.6	388.36	403	
	50		1"	14.6	30	75			107		50	17.3	25	89	127	90	33.8	404.52	419	
	54		1"	17.0	30	80			117		55	19.8	25	89	127	90	38.6	436.84	451	
	60		1"	21.0	30	80			117		55	23.8	25	89	127	90	46.3	485.33	500	
	65		1"	24.6	38	89			127		55	29.0	25	89	127	90	53.4	525.73	540	
	70		1"	28.5	38	89			127		55	32.9	25	89	127	90	61.1	566.15	581	
72	1"	30.2	38	89			127		55	34.6	25					582.31	597			
75	1"	32.8	38	89			127		60	37.1	25					606.56	621			
80	1"	37.3	38	95			137		60	43.3	25					646.91	662			
85	1"	42.1	38	95			137		60	48.1	25					687.39	702			
90	1"	47.3	38	95			137		60	53.2	25					727.80	743			
96	1"	53.8	38	95			137		60	59.8	25					776.31	791			

Order 訂貨代號 TYPE SPSD Catalog No. 20RS80B Bore configuration TG10

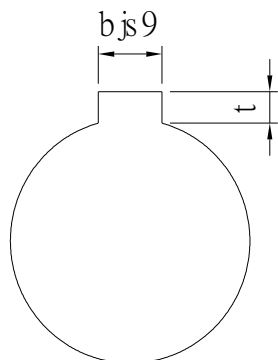
PS1 : if you need another exceptional to process the specifications form, please contact us.  
 PS2 : Bore,Key Groove & Set Screw match,Please refer to 【Core & Kew Groove & Set Screw Design Form】.  
 PS3 : when Bore D over 50,please contact us that what size of <Key Groove & Set Screw> you need.



# Core & Key Groove & Set Screw Design Form

## Core&Key Groove Dimension Form

dH7	Key Groove Width bjs9		Depth	tolerance
8	3	±0.0125	1.4	+ 0.1 0
9				
10				
11	4	±0.015	1.8	
12				
13				
14	5	±0.015	2.3	
15				
16				
17				
18	6	±0.015	2.8	
19				
20				
21				
22	8	±0.018	3.3	+ 0.2 0
23				
24				
25				
26				
28				
29				
30				
31				
32				
33	10	±0.0215	3.8	
34				
35				
38				
40	12	±0.0215	3.8	
42				
43				
44				
45	14	±0.0215	3.8	
46				
47				
48				
49				
50				



## Core&Set Screw Form

dH7	M
4	M3
5	
6	
6.35	
7	
8	M4
9	
10	
11	
12	M5
13	
14	
15	
16	
17	M6
18	
19	
20	
21	
22	
23	
24	
25	
26	
28	M8
29	
30	
31	
32	
33	
34	
35	
37	
38	
40	M10
42	
43	
44	
45	
46	
47	
48	
50	
52	
55	
57	
60	