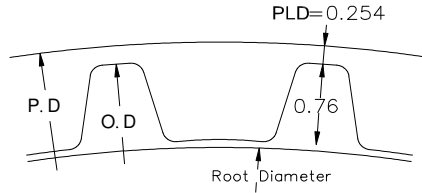




## 高扭力時規皮帶輪 S2M HIGH TORQUE TIMING PULLEYS <PULLEYS S2M >

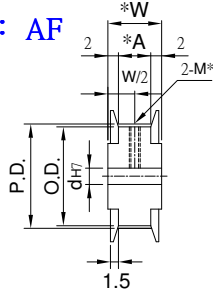


Tooth Shape :

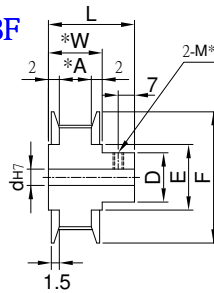


Type	Material	Treatment	Flange	Flange Treatment
PLAAA	A7075	Anodize	A6061	Anodize
PLAEA		Electroless nickel		Electroless nickel
PLS	1045	—	1045	—
PLSS	SUS303	—	A6061	Anodize

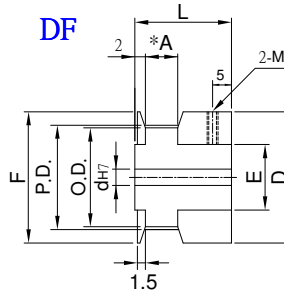
Pulley Shapes : AF



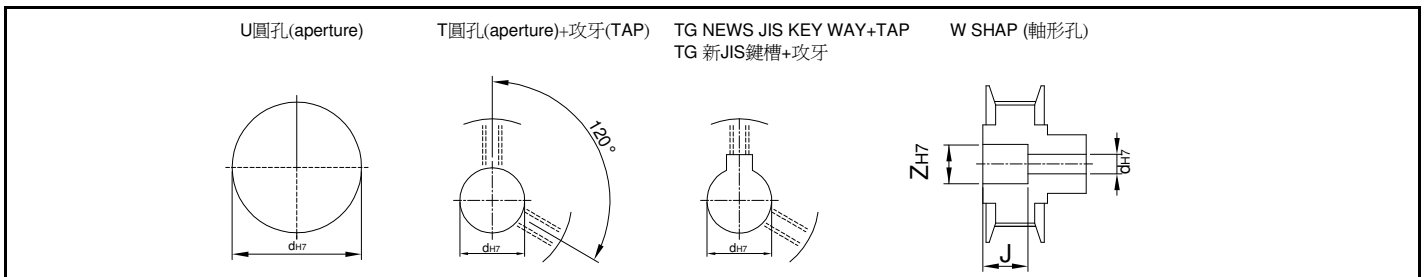
BF



DF



Type	Catalog No.			Bore configuration	Bore dh7				Bore W only (1mm Increment)		P.D.	O.D.	D	F	E	
	No. of teeth	Teeth Width Code	Pulley Shapes		U.T.TG Hole		W Hole		Z							J
					AF	BF,DF	AF	BF	AF	BF						
PLAAA PLAEA PLS PLSS	14	S2M006 A:6 W:10 L:18	DF	U	TG	—	—	—	—	—	8.91	8.4	12	12	6	
	15										9.55	9.04				
	16										10.19	9.68	14	14	8	
	18										11.46	10.95				
	20										12.73	12.22	16	16	10	
	22										14.01	13.5				
	24										15.28	14.77	20	20	13	
	25										15.92	15.41				
	26										16.55	16.04	22	22	14	
	28										17.83	17.32				
	30	19.01	18.59	25 ≤ J ≤ W-2	(AF)	—	20.37	19.86	12	25	16					
	32	21.65	21.14													
	34	22.92	22.41				14	28	18							
	36	25.46	24.96													
	40	28.01	27.5				20	32	23							
	44	30.56	30.05													
	48	31.83	31.32	25 ≤ J ≤ L-2	(BF)	—	35	25								
	50	38.2	37.69				30	44	32							
60			BF	W	5~22	5~16	6~17	6~16	9~21	9~20						



Order TYPE — Catalog No. — Bore configuration  
 訂貨代號 PLAA — 40S2M008BF — T10

PS1 : if you need another exceptional to process the specifications form, please contact us.

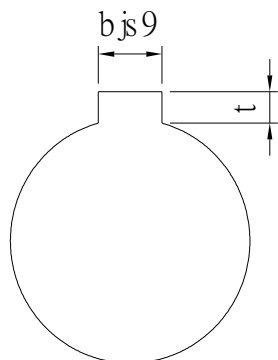
PS2 : Bore,Key Groove & Set Screw match,Please refer to 【Core & Key Groove & Set Screw Design Form】 .



# Core & Key Groove & Set Screw Design Form

## Core&Key Groove Dimension Form

dH7	Key Groove Width bjs9		Depth	tolerance
8	3	±0.0125	1.4	+ 0.1 0
9				
10				
11	4	±0.015	1.8	
12				
13				
14	5	±0.015	2.3	
15				
16				
17				
18	6	±0.015	2.8	
19				
20				
21				
22	8	±0.018	3.3	+ 0.2 0
23				
24				
25				
26				
28				
29				
30				
31				
32				
33	10	±0.0215	3.8	
34				
35				
38				
40	12	±0.0215	3.8	
42				
43				
44				
45	14	±0.0215	3.8	
46				
47				
48				
50				
50				



## Core&Set Screw Form

dH7	M
4	M3
5	
6	
6.35	
7	
8	M4
9	
10	
11	
12	M5
13	
14	
15	
16	
17	M6
18	
19	
20	
21	
22	
23	
24	
25	
26	
28	M8
29	
30	
31	
32	
33	
34	
35	
37	M10
38	
40	
42	
43	
44	
45	
46	
47	
48	
50	
52	
55	
57	
60	