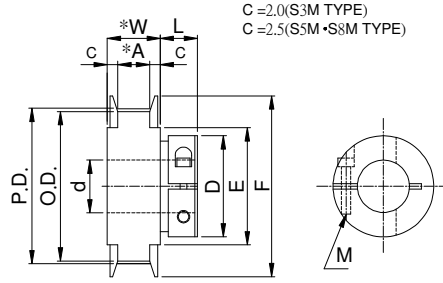


夾軸式時規皮帶輪
CLAMPING TIMING PULLEYS <S3M.S5M.S8M>



TYPE	Material	Treatment	Flange	Treatment
CLAA	A7075	Anodize	A6061	Anodize
CLAEA		Electroless nickel		Electroless nickel

▲3GT Cycle

Type	Catalog No.		d	P.D	O.D	D	F	E	L	Clamp Bolt				
	No.of teeth	Teeth Width Code								M	Clamp Torque NCm			
CLAA CLAEA	24	S3M007 A: 7 W: 11	4	22.92	22.16	13	25	16	9	2	0.4			
	26		4	24.83	24.07		28	18						
	28		4	26.74	25.98		30	20						
	30		6.8	28.65	27.89	32	23							
	32		6.8	30.56	29.80	35	25							
	36		6.8	34.38	33.62	40	28							
	40	S3M011 A: 11 W:15	8.10	38.20	37.44	26	44	32	12.5	3	1.5			
	44		8.10	42.02	41.25	31	48	36	14	4	3.5			
	48		8.10.11.12	45.84	45.07	33	50	38						
	50		8.10.11.12.13.14	47.75	46.98	36	52	40						
	60		8.10.11.12.13.14.15.16	57.30	56.53	41	61	46				15.5	5	6

▲5GT Cycle

Type	Catalog No.		d	P.D	O.D	D	F	E	L	Clamp Bolt				
	No.of teeth	Teeth Width Code								M	Clamp Torque NCm			
CLAA CLAEA	24	S5M011 A: 11 W:16	8.10	38.20	37.24	26	45	30	12.5	3	1.5			
	25		8.10	39.79	38.83							48	35	
	26		8.10	41.38	40.42									
	28		8.10	44.56	43.60	31	52	36				14	4	3.5
	30		10	47.75	46.79									
	32		10.11.12.13.14	50.93	49.97									
	34		10.11.12.13.14.15.16	54.11	53.15	41	61	45				15.5	5	6
	36		10.11.12.13.14.15.16	57.30	56.34									
	40		10.11.12.13.14.15.16.17.18.19	63.66	62.70									
	44		S5M017 A: 17 W: 22	12.13.14.15.16.17.18.19	70.03	69.07	46	74				58	15.5	5
	48	20.21.22.23.24		76.39	75.43	55	83	63	16.5	6	12			
	50	12.13.14.15.16.17.18.19				46	87	67	15.5	5	6			
	60	20.21.22.23.24.25				55	99	80	16.5	6	12			
		12.13.14.15.16.17.18.19				46	95.49	94.53	46	99	80	15.5	5	6
		20.21.22.23.24.25	55					55			16.5	6	12	

▲8YU Cycle

Type	Catalog No.		d	P.D	O.D	D	F	E	L	Clamp Bolt		
	No.of teeth	Teeth Width Code								M	Clamp Torque NCm	
CLAA CLAEA	20	S8M017 A: 17 W: 22	12.13.14	50.93	49.56	36	58	40	14	4	3.5	
	22		12.13.14.15.16	56.02	54.65	41	61	45				
	24		12.13.14.15.16.17.18.19	61.12	59.74	46	67	50				
	25		12.13.14.15.16.17.18.19	63.66	62.29		70	56				
	28		15.16.17.18.19	71.30	69.93		80	60				
	30		S8M028 A: 28 W: 33	20.21.22.23.24.25	76.39	75.02	55	87	67	17	6	12
	32			15.16.17.18.19			46			16	5	6
				20.21.22.23.24.25			55			17	6	12
				18.19			46			16	5	6
				20.21.22.23.24.25			55			17	6	12
				18.19			46			16	5	6
			20.21.22.23.24.25	55	17	6	12					
	18.19	46	16	5	6							
	20.21.22.23.24.25	55	17	6	12							
	18.19	46	16	5	6							
	20.21.22.23.24.25	55	17	6	12							

Order TYPE — Catalog No. — Bore d
 訂購範例 CLAEA — 305GT017 — 10

PS1 : if you need another exceptional to process the specifications form, please contact us.

▲ Allowable Max Torque (S3M)

▲ Allowable Max Torque S5M)

▲ Allowable Max Torque (S8M)

Cycle	No.of teeth	d	(N · m)	Cycle	No.of teeth	d	(N · m)	Cycle	No.of teeth	d	(N · m)				
S3M	24.26.28	4	0.16	S5M	24.25	8	2.6	S8M	20	12	2.6				
		6	0.95			10				13					
		8	2.6		8	14	7.6								
	30.32	6	0.95		26.28	10	2.6		22	12	2.6				
		8	2.6			10	13			7.6					
	36	6	0.95		30	10	2.6		24.25	12	7.6				
		8	2.6			10				14					
	40	8	2.6		32	10	2.6			28.30		15	2.6		
		10				12						16			
	44	8	2.6			34.36				11		7.6	24.25	17	7.6
		10							12	18					
	48	8	2.6						40	13	7.6			28.30	
		10			14		20								
		11			15		21								
		12			16	22									
	50	8	2.6		44.48.50.60	17	7.6			32.34.36		23	66		
10		18		24											
11		19		25											
12		20		18		7.6									
13	21	19	48												
60	14	7.6	44.48.50.60	22		7.6		32.34.36	20	48					
	15			23					21		48				
	16			24					22		66				
				25					23		66				
									24		95	24	95		
					25		95	25	95						