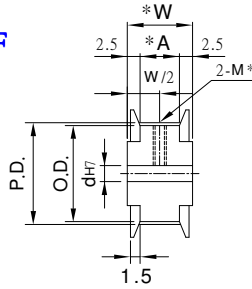




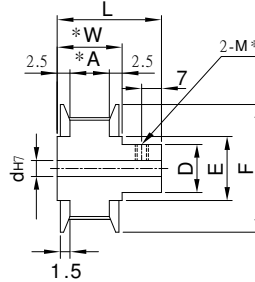
時規皮帶輪 XL TIMING PULLEYS < XL PULLEYS >

	Tooth Shape : 	Type	Material	Treatment	Flange	Flange Treatment
		PLAAA	A7075	Anodize	A6061	Anodize
		PLAEA		Electroless nickel		Electroless nickel
		PLS	1045	—	1045	—
PLSS	SUS303	—	A6061	Anodize		

Pulley Shapes : AF



BF



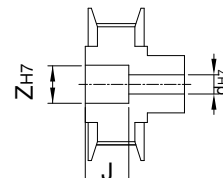
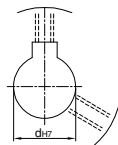
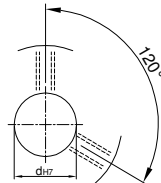
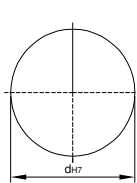
Type	Catalog No.			Bore configuration	Bore dh7				Bore W only (1mm Increment)		P.D.	O.D.	D	F	E	
	No.of teeth	Teeth Width Code	Pulley Shape		U.T.TG Hole		W Hole		Z							J
					AF	BF	AF	BF	AF	BF						
PLAAA PLAEA PLS PLSS	10	XL008 A:8 W:12 L:21	BF	—	5 • 6	—	—	—	—	—	—	16.17	15.66	10	24	12
	11				5 • 6	—	—	—	—	17.79	27.28					
	12				5 • 6	—	—	—	—	19.4	18.9	12	25			
	14				6~8	—	—	—	—	22.64	22.13	15	28	18		
	15				6~10	—	—	—	—	24.26	23.75	17	32	20		
	16				6~10	6~7	6	9~10	9	25.87	25.36	24	36	24		
	18				6~12	6~10	6~9	9~14	9~12	29.11	28.6				21	
	19				6~15	6~10	6~9	9~14	9~12	30.72	30.22	26	40	27		
	20				8~16	8~13	8~10	11~17	11~14	32.34	31.83					
	21				8~18	8~13	8~10	11~17	11~14	33.96	33.45	30	45	30		
	22	8~20	8~15	8~13	11~20	11~16	35.57	35.07								
	24	8~22	8~15	8~16	11~20	11~16	38.81	38.3	35	48	35					
	25	8~22	8~18	8~20	11~25	11~20	40.43	39.92								
	26	8~23	8~18	8~20	11~25	11~20	42.04	41.53	40	55	40					
	28	8~25	8~24	8~20	13~30	13~25	45.28	44.77								
	30	10~30	10~24	10~20	13~30	13~25	48.51	48	61	45	45					
	32	10~30	10~28	10~24	13~32	13~30	51.74	51.24								
	34	10~30	10~28	10~24	13~32	13~30	54.98	54.47	67	50	50					
	36	10~38	10~25	10~24	13~35	13~30	58.21	57.7								
	38	10~43	10~25	10~24	13~35	13~30	61.45	60.94	74	58	58					
	40	10~47	10~25	10~24	13~46	13~30	64.68	64.17								
	42	10~50	10~25	10~24	13~46	13~30	67.91	67.41	80	60	60					
	44	10~50	10~25	10~24	13~46	13~30	71.15	70.64								
	46	10~55	10~25	10~24	13~50	13~30	74.38	73.87	87	67	67					
	48	10~55	10~25	10~24	13~50	13~30	77.62	77.11								
	50	10~55	10~25	10~24	13~50	13~30	80.85	80.34	104	84	84					
	60	10~55	10~25	10~24	13~55	13~30	97.02	96.51								
	72	10~55	10~25	10~24	13~55	13~30	116.43	115.92	123	102	102					

U圓孔(aperture)

T圓孔(aperture)+攻牙(TAP)

TG NEWS JIS KEY WAY+TAP
TG 新JIS鍵槽+攻牙

W SHAP (軸形孔)



Order TYPE — Catalog No. — Bore configuration
 訂貨代號 PLAA — 20XL012BF — T10

PS1 : if you need another exceptional to process the specifications form, please contact us.

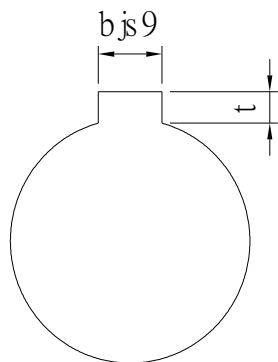
PS2 : Bore,Key Groove & Set Screw match,Please refer to 【Core & Key Groove & Set Screw Design Form】.



Core & Key Groove & Set Screw Design Form

Core&Key Groove Dimension Form

dH7	Key Groove Width bjs9		Depth	tolerance
8	3	±0.0125	1.4	+ 0.1 0
9				
10				
11	4	±0.015	1.8	
12				
13				
14	5	±0.015	2.3	
15				
16				
17				
18	6	±0.015	2.8	
19				
20				
21				
22	8	±0.018	3.3	+ 0.2 0
23				
24				
25				
26				
28				
29				
30				
31				
32				
33	10	±0.0215	3.8	
34				
35				
38				
40	12	±0.0215	3.8	
42				
43				
44				
45	14	±0.0215	3.8	
46				
47				
48				
50				
50				



Core&Set Screw Form

dH7	M
4	M3
5	
6	
6.35	
7	
8	M4
9	
10	
11	
12	M5
13	
14	
15	
16	
17	M6
18	
19	
20	
21	
22	
23	
24	
25	
26	
28	M8
29	
30	
31	
32	
33	
34	
35	
37	M10
38	
40	
42	
43	
44	
45	
46	
47	
48	
50	
52	
55	
57	
60	